

For Research Use Only

# CoraLite®594-conjugated EIF1 Monoclonal antibody



Catalog Number:CL594-67601

## Basic Information

Catalog Number:

CL594-67601

Size:

1000 µg/ml

Source:

Mouse

Isotype:

IgG2b

Immunogen Catalog Number:

AG7843

GenBank Accession Number:

BC005118

GeneID (NCBI):

10209

UNIPROT ID:

P41567

Full Name:

eukaryotic translation initiation

factor 1

Calculated MW:

13 kDa

Observed MW:

13 kDa

Purification Method:

Protein A purification

CloneNo.:

2G8C6

Recommended Dilutions:

IF/ICC 1:50-1:500

Excitation/Emission maxima

wavelengths:

588 nm / 604 nm

## Applications

Tested Applications:

IF/ICC

Species Specificity:

Human

Positive Controls:

IF/ICC : MCF-7 cells, HepG2 cells

## Background Information

It is a necessary for scanning and involved in initiation site selection. Promotes the assembly of 48S ribosomal complexes at the authentic initiation codon of a conventional capped mRNA. Molecular weight is 13kd.

## Storage

Storage:

Store at -20°C. Avoid exposure to light.

Storage Buffer:

PBS with 50% Glycerol, 0.05% Proclin300, 0.5% BSA, pH 7.3.

Aliquoting is unnecessary for -20°C storage

For technical support and original validation data for this product please contact:

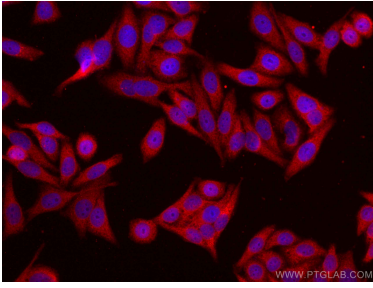
T: 4006900926

E: [Proteintech-CN@ptglab.com](mailto:Proteintech-CN@ptglab.com)

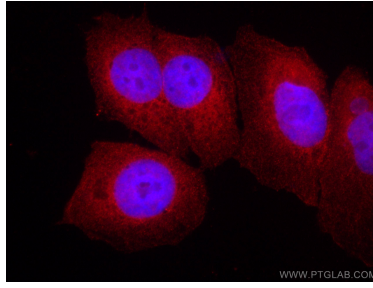
W: [ptgcn.com](http://ptgcn.com)

This product is exclusively available under Proteintech Group brand and is not available to purchase from any other manufacturer.

## Selected Validation Data



Immunofluorescent analysis of (-20°C Ethanol) fixed HepG2 cells using CoraLite®594 EIF1 antibody (CL594-67601, Clone: 2G8C6) at dilution of 1:200.



Immunofluorescent analysis of (4% PFA) fixed MCF-7 cells using CoraLite®594 EIF1 antibody (CL594-67601, Clone: 2G8C6) at dilution of 1:200.