

For Research Use Only

CoraLite®594-conjugated KBTBD2 Monoclonal antibody



Catalog Number:CL594-67895

Basic Information

Catalog Number:

CL594-67895

Size:

1000 µg/ml

Source:

Mouse

Isotype:

IgG1

Immunogen Catalog Number:

AG4933

GenBank Accession Number:

BC047107

GeneID (NCBI):

25948

UNIPROT ID:

Q8IY47

Full Name:

kelch repeat and BTB (POZ) domain
containing 2

Calculated MW:

622 aa, 71 kDa

Observed MW:

71 kDa

Purification Method:

Protein G purification

CloneNo.:

2A9F3

Recommended Dilutions:

IF/ICC 1:50-1:500

Excitation/Emission maxima
wavelengths:

588 nm / 604 nm

Applications

Tested Applications:

IF/ICC

Species Specificity:

Human, mouse, rat

Positive Controls:

IF/ICC : HeLa cells,

Background Information

Kelch repeat and BTB domain containing 2(KBTBD2), also known as BTB and kelch domain-containing protein 1, encodes a BTB-Kelch family subunit that p85 α -specific recognition for the Cullin3-based E3 ubiquitin ligase complex, which regulates p85 α protein ubiquitination and subsequently regulates phosphoinositide-3 kinases (PI3K) signaling (PMID:27708159). However, the expression profile and functional significance of Kbtbd2 is still largely unknown. The Human Protein Atlas which is an online source shows high Kbtbd2 expression in the spleen and thymus, suggesting that Kbtbd2 might involved in immunization (PMID:29331106). In addition, Kbtbd2 is related to Src-induced phosphorylation of protein, spermatogonial stem cell activity(PMID:15623525, 29331106).

Storage

Storage:

Store at -20°C. Avoid exposure to light. Stable for one year after shipment.

Storage Buffer:

PBS with 50% Glycerol, 0.05% Proclin300, 0.5% BSA, pH 7.3.

Aliquoting is unnecessary for -20°C storage

For technical support and original validation data for this product please contact:

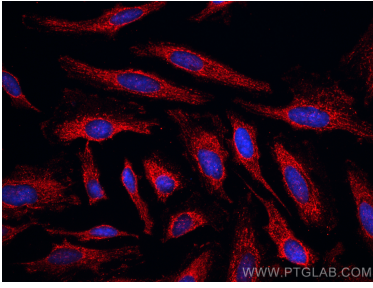
T: 4006900926

E: Proteintech-CN@ptglab.com

W: ptgcn.com

This product is exclusively available under Proteintech Group brand and is not available to purchase from any other manufacturer.

Selected Validation Data



Immunofluorescent analysis of (-20°C Methanol) fixed HeLa cells using CoraLite®594 KBTBD2 antibody (CL594-67895, Clone: 2A9F3) at dilution of 1:200.