

For Research Use Only

CoraLite®594-conjugated ATG16L1 Monoclonal antibody



Catalog Number:CL594-67943

Basic Information

Catalog Number: CL594-67943	GenBank Accession Number: BC000061	Purification Method: Protein G purification
Size: 1000 µg/ml	GeneID (NCBI): 55054	CloneNo.: 1G5G7
Source: Mouse	UNIPROT ID: Q676U5	Recommended Dilutions: IF 1:50-1:500
Isotype: IgG1	Full Name: ATG16 autophagy related 16-like 1 (S.cerevisiae)	Excitation/Emission maxima wavelengths: 588 nm / 604 nm
Immunogen Catalog Number: AG14881	Calculated MW: 607 aa, 68 kDa	
	Observed MW: 68-75 kDa	

Applications

Tested Applications: IF/ICC	Positive Controls: IF : HepG2 cells,
Species Specificity: Human, mouse, rat	

Background Information

Human ATG16L1 is a 607 amino acid protein (~68 kDa) comprising three major domains: the N - terminal ATG5 binding domain (ATG5 - BD), the central coiled - coil domain (CCD) and a predicted C - terminal WD40 - domain. ATG16L1 α and β (Atg16L1 α , 63 kDa; and Atg16L1 β , 71 kDa) are the major isoforms expressed in intestinal epithelium and macrophages , and all isoforms encode exon 9, which contains Thr 300. Atg16L1 mediates the cellular degradative process of autophagy and is considered a critical regulator of inflammation based on its genetic association with inflammatory bowel disease. ATG16L1 has been implicated in Crohn's disease. (PMID: 24553140, PMID: 22740627, PMID: 28685931)

Storage

Storage:
Store at -20°C. Avoid exposure to light. Stable for one year after shipment.
Storage Buffer:
PBS with 50% Glycerol, 0.05% Proclin300, 0.5% BSA, pH 7.3.
Aliquoting is unnecessary for -20°C storage

For technical support and original validation data for this product please contact:

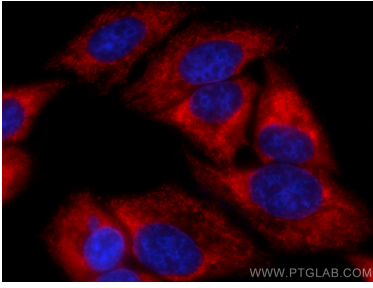
T: 4006900926

E: Proteintech-CN@ptglab.com

W: ptgcn.com

This product is exclusively available under Proteintech Group brand and is not available to purchase from any other manufacturer.

Selected Validation Data



Immunofluorescent analysis of (-20°C Methanol) fixed HepG2 cells using CoraLite@594 ATG16L1 antibody (CL594-67943, Clone: 1G5G7) at dilution of 1:200.