

For Research Use Only

CoraLite®594-conjugated RPL9 Monoclonal antibody



Catalog Number:CL594-68054

Basic Information

Catalog Number:

CL594-68054

Size:

1000 µg/ml

Source:

Mouse

Isotype:

IgG1

Immunogen Catalog Number:

AG5391

GenBank Accession Number:

BC066318

GeneID (NCBI):

6133

UNIPROT ID:

P32969

Full Name:

ribosomal protein L9

Calculated MW:

22 kDa

Observed MW:

22 kDa

Purification Method:

Protein G purification

CloneNo.:

2A6B11

Recommended Dilutions:

IF-P 1:50-1:500

Excitation/Emission maxima

wavelengths:

588 nm / 604 nm

Applications

Tested Applications:

IF-P

Species Specificity:

Human, Mouse, Rat

Positive Controls:

IF-P: mouse cerebellum tissue,

Background Information

Storage

Storage:

Store at -20°C. Avoid exposure to light. Stable for one year after shipment.

Storage Buffer:

PBS with 50% Glycerol, 0.05% Proclin300, 0.5% BSA, pH 7.3.

Aliquoting is unnecessary for -20°C storage

For technical support and original validation data for this product please contact:

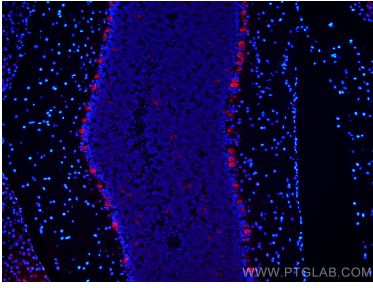
T: 4006900926

E: Proteintech-CN@ptglab.com

W: ptgcn.com

This product is exclusively available under Proteintech Group brand and is not available to purchase from any other manufacturer.

Selected Validation Data



Immunofluorescent analysis of (4% PFA) fixed mouse cerebellum tissue using CoraLite®594 RPL9 antibody (CL594-68054, Clone: 2A6B11) at dilution of 1:200.