

For Research Use Only

# CoraLite® Plus 594-conjugated CCT2 Monoclonal antibody



Catalog Number: CL594-68214

## Basic Information

<b>Catalog Number:</b> CL594-68214	<b>GenBank Accession Number:</b> BC113516	<b>Purification Method:</b> Protein G purification
<b>Size:</b> 1000 µg/ml	<b>GeneID (NCBI):</b> 10576	<b>CloneNo.:</b> 2H6C7
<b>Source:</b> Mouse	<b>UNIPROT ID:</b> P78371	<b>Recommended Dilutions:</b> IF/ICC 1:50-1:500
<b>Isotype:</b> IgG1	<b>Full Name:</b> chaperonin containing TCP1, subunit 2 (beta)	<b>Excitation/Emission maxima wavelengths:</b> 594 nm / 615 nm
<b>Immunogen Catalog Number:</b> AG19264	<b>Calculated MW:</b> 535 aa, 57 kDa	
	<b>Observed MW:</b> 50-58 kDa	

## Applications

<b>Tested Applications:</b> IF/ICC, FC (Intra)	<b>Positive Controls:</b> IF/ICC : NIH/3T3 cells,
<b>Species Specificity:</b> human, mouse, rat, pig, rabbit	

## Background Information

CCT2 is a gene encoding a molecular chaperone that is a member of the chaperonin containing TCP1 complex (CCT), also known as the TCP1 ring complex (TRiC). The switch of CCT2's role from a chaperonin to a specific aggregophagy receptor is achieved by CCT2 monomer formation. CCT2 functions independently of ubiquitin and the TRiC complex to facilitate the autophagic clearance of solid protein aggregates. CCT2 has 2 isoforms with the molecular mass of 53 and 57 kDa. (PMID: 35699934)

## Storage

**Storage:**  
Store at -20°C. Avoid exposure to light. Stable for one year after shipment.  
**Storage Buffer:**  
PBS with 50% Glycerol, 0.05% Proclin300, 0.5% BSA, pH 7.3.  
Aliquoting is unnecessary for -20°C storage

For technical support and original validation data for this product please contact:

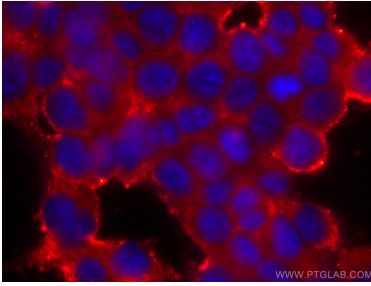
T: 4006900926

E: [Proteintech-CN@ptglab.com](mailto:Proteintech-CN@ptglab.com)

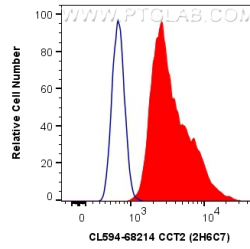
W: [ptgcn.com](http://ptgcn.com)

This product is exclusively available under Proteintech Group brand and is not available to purchase from any other manufacturer.

## Selected Validation Data



Immunofluorescent analysis of (-20°C Methanol) fixed NIH/3T3 cells using CoraLite® Plus 594 CCT2 antibody (CL594-68214, Clone: 2H6C7) at dilution of 1:200.



1X10<sup>6</sup> NIH/3T3 cells were intracellularly stained with 0.5 ug CoraLite® Plus 594 Anti-Human CCT2 (CL594-68214, Clone:2H6C7) (red), or 0.5 ug CoraLite® 594 Mouse IgG1 Isotype Control (MOPC-21) (CL594-65124, Clone: MOPC-21) (blue). Cells were fixed with 4% PFA and permeabilized with Flow Cytometry Perm Buffer (PF00011-C).