

For Research Use Only

# CoraLite®594 Anti-Human N-cadherin/CD325 Rabbit Recombinant Antibody

Catalog Number: CL594-98006



## Basic Information

Catalog Number:

CL594-98006

Concentration:

100 tests, 5 µl/test

Source:

Rabbit

Isotype:

IgG

GenBank Accession Number:

NM\_001792.4

GeneID (NCBI):

1000

UNIPROT ID:

P19022-1

Full Name:

cadherin 2, type 1, N-cadherin (neuronal)

Calculated MW:

100 kDa

Purification Method:

Protein A purification

CloneNo.:

230259D7

Excitation/Emission maxima wavelengths:

588 nm / 604 nm

## Applications

Tested Applications:

FC

Species Specificity:

human

## Background Information

Cadherins are a family of transmembrane glycoproteins that mediate calcium-dependent cell-cell adhesion and play an important role in the maintenance of normal tissue architecture. N-cadherin (neural cadherin), also known as CDH2 (cadherin 2), is a 130-kDa transmembrane protein and a classical member of the cadherin superfamily which also include E-, P-, R-, and B-cadherins. Expression of N-cadherin has been reported on various cell types including neurons, endothelial cells and cardiac myocytes (PMID: 11282032; 9508779; 8125202). N-cadherin has functions in early brain morphogenesis, synaptogenesis and synaptic plasticity (PMID: 23321619).

## Storage

Storage:

Store at 2-8°C. Avoid exposure to light. Stable for one year after shipment.

Storage Buffer:

PBS with 0.09% sodium azide and 0.5% BSA

For technical support and original validation data for this product please contact:

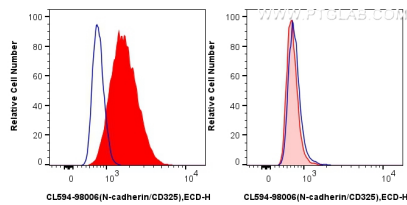
T: 4006900926

E: [Proteintech-CN@ptglab.com](mailto:Proteintech-CN@ptglab.com)

W: [ptgcn.com](http://ptgcn.com)

This product is exclusively available under Proteintech Group brand and is not available to purchase from any other manufacturer.

## Selected Validation Data



1x10<sup>6</sup> HeLa cells (left) or MCF-7 cells (right) were surface stained with 5  $\mu$ l CoraLite®594 Anti-Human N-cadherin/CD325 Rabbit RecAb (CL594-98006, Clone: 230259D7) (red), or CoraLite®594 Rabbit IgG Isotype Control RecAb (CL594-98136, Clone: 240953C9) (blue). Cells were not fixed.