

For Research Use Only

CoraLite®594 Anti-Mouse MCP-1/CCL2 Rabbit Recombinant Antibody

Catalog Number:CL594-98028



Basic Information

Catalog Number:

CL594-98028

Size:

100ug, 500 ug/ml

Source:

Rabbit

Isotype:

IgG

GenBank Accession Number:

NM-011333

GeneID (NCBI):

20296

UNIPROT ID:

P10148

Full Name:

chemokine (C-C motif) ligand 2

Purification Method:

Protein A purification

CloneNo.:

230483A9

Excitation/Emission maxima

wavelengths:

588 nm / 604 nm

Applications

Tested Applications:

FC (Intra)

Species Specificity:

mouse

Background Information

Monocyte chemoattractant protein 1 (MCP-1; also known as CCL2), is chemotactic for monocyte/macrophage, B-cell, and T-lymphocyte, and belongs to the CC subfamily of chemokines. Chemokines are a superfamily of secreted proteins involved in immunoregulatory and inflammatory processes. The human ortholog has been implicated in the pathogenesis of diseases characterized by monocytic infiltrates, such as psoriasis, rheumatoid arthritis, and atherosclerosis.

Storage

Storage:

Store at 2-8°C. Avoid exposure to light. Stable for one year after shipment.

Storage Buffer:

PBS with 0.09% sodium azide.

For technical support and original validation data for this product please contact:

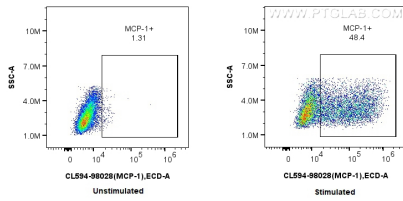
T: 4006900926

E: Proteintech-CN@ptglab.com

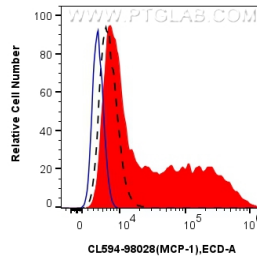
W: ptgcn.com

This product is exclusively available under Proteintech Group brand and is not available to purchase from any other manufacturer.

Selected Validation Data



1x10⁶ untreated or LPS and Brefeldin A treated RAW 264.7 cells were intracellularly stained with 0.25 ug CoraLite®594 Anti-Mouse MCP-1 Rabbit Recombinant Antibody (CL594-98028, Clone: 230483A9). Cells were fixed with 4% PFA and permeabilized with Flow Cytometry Perm Buffer (PF00011-C).



1x10⁶ LPS and Brefeldin A treated RAW 264.7 cells were intracellularly stained with 0.25 ug CoraLite®594 Anti-Mouse MCP-1 Rabbit Recombinant Antibody (CL594-98028, Clone: 230483A9) (red), or 0.25 ug Isotype Control (blue). 1x10⁶ untreated RAW 264.7 cells were intracellularly stained with 0.25 ug CoraLite®594 Anti-Mouse MCP-1 Rabbit Recombinant Antibody (CL594-98028, Clone: 230483A9) (black, dashed). Cells were fixed with 4% PFA and permeabilized with Flow