

# CoraLite®594 Anti-Human CD324 (E-cadherin) Rabbit Recombinant Antibody

Catalog Number: CL594-98030

## Basic Information

**Catalog Number:**

CL594-98030

**Concentration:**

100 tests, 5 µl/test

**Source:**

Rabbit

**Isotype:**

IgG

**Immunogen Catalog Number:**

AG14973

**GenBank Accession Number:**

BC141838

**GeneID (NCBI):**

999

**UNIPROT ID:**

P12830

**Full Name:**

cadherin 1, type 1, E-cadherin (epithelial)

**Calculated MW:**

882 aa, 97 kDa

**Purification Method:**

Protein A purification

**CloneNo.:**

240159G8

**Excitation/Emission maxima wavelengths:**

588 nm / 604 nm

## Applications

**Tested Applications:**

FC

**Species Specificity:**

human

## Background Information

Cadherins are a family of transmembrane glycoproteins that mediate calcium-dependent cell-cell adhesion and play an important role in the maintenance of normal tissue architecture. E-cadherin (epithelial cadherin), also known as CD324, CDH1 (cadherin 1) or CAM 120/80, is a classical member of the cadherin superfamily which also include N-, P-, R-, and B-cadherins. E-cadherin is expressed on the cell surface in most epithelial tissues. The extracellular region of E-cadherin establishes calcium-dependent homophilic trans binding, providing specific interaction with adjacent cells, while the cytoplasmic domain is connected to the actin cytoskeleton through the interaction with p120-,  $\alpha$ -,  $\beta$ -, and  $\gamma$ -catenin (plakoglobin). E-cadherin is important in the maintenance of the epithelial integrity, and is involved in mechanisms regulating proliferation, differentiation, and survival of epithelial cell. E-cadherin may also play a role in tumorigenesis. It is considered to be an invasion suppressor protein and its loss is an indicator of high tumor aggressiveness.

## Storage

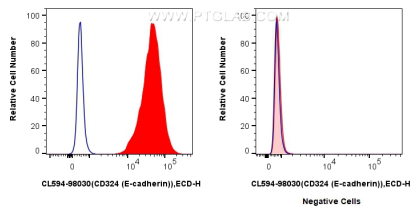
**Storage:**

Store at 2-8°C. Avoid exposure to light. Stable for one year after shipment.

**Storage Buffer:**

PBS with 0.09% sodium azide and 0.5% BSA

## Selected Validation Data



1x10<sup>6</sup> MCF-7 cells (left) or Jurkat cells (right) were surface stained with 5 ul CoraLite®594 Anti-Human CD324 (E-cadherin) Rabbit RecAb (CL594-98030, Clone: 240159G8) (red), or CoraLite®594 Rabbit IgG Isotype Control RecAb (CL594-98136, Clone: 240953C9) (blue). Cells were not fixed.