

For Research Use Only

CoraLite®594 Anti-Rat IL-2 Rabbit Recombinant Antibody

Catalog Number: CL594-98046



Basic Information

Catalog Number:

CL594-98046

Concentration:

100ug, 500 ug/ml

Source:

Rabbit

Isotype:

IgG

Immunogen Catalog Number:

EG0260

GenBank Accession Number:

NM_053836

GeneID (NCBI):

116562

UNIPROT ID:

P17108

Full Name:

interleukin 2

Calculated MW:

18 kDa

Purification Method:

Protein A purification

CloneNo.:

240264C7

Recommended Dilutions:

FC (Intra): 0.25 ug per 10⁶ cells in

100 µL suspension

Excitation/Emission maxima
wavelengths:

588 nm / 604 nm

Applications

Tested Applications:

FC (Intra)

Species Specificity:

rat

Positive Controls:

FC (Intra) : PMA and ionomycin treated rat splenocytes,

Background Information

Interleukin-2 (IL-2) is a four-helix bundle, type I cytokine that functions as a growth factor for a wide range of leukocytes. In the immune system, IL-2 is essential for immune homeostasis, normal T regulatory cell function, and self-tolerance. It regulates immune cell homeostasis and has been used to treat a range of disorders including cancer and autoimmune disease. IL-2 signals through heterodimerization of the IL-2R β and IL-2R γ receptor subunits (PMID: 25992858, 24907378, 15034008, 17981641).

Storage

Storage:

Store at 2-8°C. Avoid exposure to light. Stable for one year after shipment.

Storage Buffer:

PBS with 0.09% sodium azide, pH7.3

For technical support and original validation data for this product please contact:

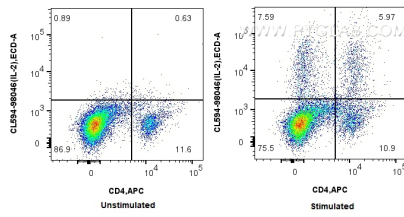
T: 4006900926

E: Proteintech-CN@ptglab.com

W: ptgcn.com

This product is exclusively available under Proteintech Group brand and is not available to purchase from any other manufacturer.

Selected Validation Data



1x10⁶ untreated or PMA and ionomycin treated rat splenocytes were intracellularly stained with APC Anti-Rat CD4 and 0.25 ug CoraLite® 594 Anti-Rat IL-2 Rabbit Recombinant Antibody (CL594-98046, Clone: 240264C7). Cells were fixed with 4% PFA and permeabilized with Flow Cytometry Perm Buffer.