

For Research Use Only

CoraLite®594 Anti-Human CSF2RA/CD116 Rabbit Recombinant Antibody

Catalog Number:CL594-98066



Basic Information

Catalog Number:

CL594-98066

Size:

100tests, 5 ul/test

Source:

Rabbit

Isotype:

IgG

GenBank Accession Number:

BC002635

GeneID (NCBI):

1438

UNIPROT ID:

P15509

Full Name:

colony stimulating factor 2 receptor,
alpha, low-affinity (granulocyte-
macrophage)

Calculated MW:

46 kDa

Purification Method:

Protein A purification

CloneNo.:

241266B11

Excitation/Emission maxima
wavelengths:

588 nm / 604 nm

Applications

Tested Applications:

FC

Species Specificity:

human

Background Information

CD116, also named as CSF2RA CDw116 CSF2RAX CSF2RAY CSF2RX CSF2RY GM-CSF-R-alpha GMCSFR and GMR, is a low affinity receptor for granulocyte-macrophage colony-stimulating factor. CD116 transduces a signal that results in the proliferation, differentiation, and functional activation of hematopoietic cells.

Storage

Storage:

Store at 2-8°C. Avoid exposure to light. Stable for one year after shipment.

Storage Buffer:

PBS with 0.09% sodium azide and 0.5% BSA.

For technical support and original validation data for this product please contact:

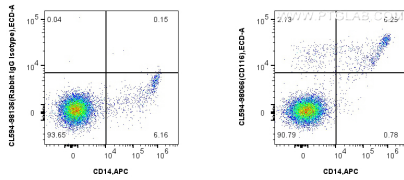
T: 4006900926

E: Proteintech-CN@ptglab.com

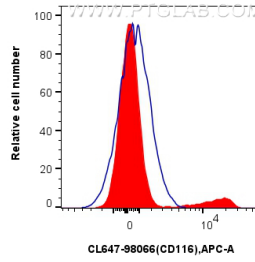
W: ptgcn.com

This product is exclusively available under Proteintech Group brand and is not available to purchase from any other manufacturer.

Selected Validation Data



1x10⁶ human PBMCs were surface stained with APC Anti-Human CD14 and 0.25 ug CoraLite®594 Anti-Human CSF2RA/CD116 Rabbit Recombinant Antibody (CL594-98066, Clone: 241266B11), or CoraLite®594 Rabbit IgG Isotype Control Recombinant Antibody (CL594-98136, Clone: 240953C9). Cells were incubated with FC Receptor Block prior to staining. Cells were not fixed.



1x10⁶ human PBMCs were surface stained with 0.25 ug CoraLite®594 Anti-Human CSF2RA/CD116 Rabbit Recombinant Antibody (CL594-98066, Clone: 241266B11) (red), or CoraLite®594 Rabbit IgG Isotype Control Recombinant Antibody (CL594-98136, Clone: 240953C9) (blue). Cells were incubated with FC Receptor Block prior to staining. Cells were not fixed.