

For Research Use Only

CoraLite®594 Anti-Human IL-7Ra/CD127 Rabbit Recombinant Antibody

Catalog Number: CL594-98074



Basic Information

Catalog Number: CL594-98074	GenBank Accession Number: AAC83204.1	Purification Method: Protein A purification
Size: 100tests, 5 ul/test	GeneID (NCBI): 3575	CloneNo.: 240749H2
Source: Rabbit	ENSEMBL Gene ID: ENSG00000168685	Excitation/Emission maxima wavelengths: 588 nm / 604 nm
Isotype: IgG	UNIPROT ID: P16871-1(I66T, V138I)	
	Full Name: interleukin 7 receptor	
	Calculated MW: 52 kDa	

Applications

Tested Applications:
FC

Species Specificity:
human

Background Information

CD127, also known as IL-7R subunit alpha (IL-7RA), is a type I membrane glycoprotein expressed on thymocytes, B cell precursors, most T cells, and some lymphoid and myeloid cells. IL-7R is a heterodimer composed of CD127 and the common- γ chain receptor (CD132). IL-7R plays critical roles in lymphocyte development and homeostasis. CD127 can also act as a receptor for thymic stromal lymphopoietin (TSLP).

Storage

Storage:
Store at 2-8°C. Avoid exposure to light. Stable for one year after shipment.

Storage Buffer:
PBS with 0.09% sodium azide and 0.5% BSA.

For technical support and original validation data for this product please contact:

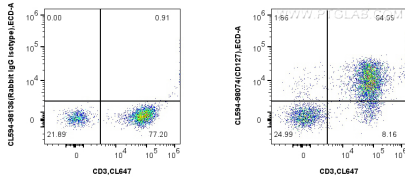
T: 4006900926

E: Proteintech-CN@ptglab.com

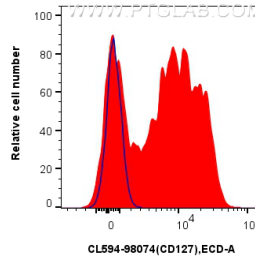
W: ptgcn.com

This product is exclusively available under Proteintech Group brand and is not available to purchase from any other manufacturer.

Selected Validation Data



1x10⁶ human PBMCs were surface stained with CoraLite® Plus 647 Anti-Human CD3 and 5 ul CoraLite®594 Anti-Human IL-7Ra/CD127 Rabbit Recombinant Antibody (CL594-98074, Clone: 240749H2), or CoraLite®594 Rabbit IgG Isotype Control Recombinant Antibody (CL594-98136, Clone: 240953C9). Cells were incubated with FC Receptor Block prior to staining. Cells were not fixed.



1x10⁶ human PBMCs were surface stained with 5 ul CoraLite®594 Anti-Human IL-7Ra/CD127 Rabbit Recombinant Antibody (CL594-98074, Clone: 240749H2) (red), or CoraLite®594 Rabbit IgG Isotype Control Recombinant Antibody (CL594-98136, Clone: 240953C9) (blue). Cells were incubated with FC Receptor Block prior to staining. Cells were not fixed.