

For Research Use Only

# CoraLite®594 Anti-Human CD8b Rabbit Recombinant Antibody

Catalog Number: CL594-98103



## Basic Information

Catalog Number:

CL594-98103

Concentration:

100 tests, 5 µl/test

Source:

Rabbit

Isotype:

IgG

GenBank Accession Number:

BC100913

GeneID (NCBI):

926

UNIPROT ID:

P10966

Full Name:

CD8b molecule

Calculated MW:

243 aa, 27 kDa

Purification Method:

Protein A purification

CloneNo.:

241326A7

Excitation/Emission maxima

wavelengths:

588 nm / 604 nm

## Applications

Tested Applications:

FC

Species Specificity:

human

## Background Information

CD8b (T-cell surface glycoprotein CD8 beta chain) is an integral membrane glycoprotein that forms disulfide-linked heterodimers with CD8a (CD8 alpha chain). The CD8 alpha/beta heterodimer is the predominant CD8 complex expressed on the cell surface (PMID: 1534146; 2111591). CD8 is a transmembrane glycoprotein predominantly expressed on the surface of cytotoxic T cells and can also be found on natural killer cells, cortical thymocytes, and dendritic cells. CD8 serves as a co-receptor for the T cell receptor (TCR). Both CD8 and TCR recognize antigens displayed by an antigen presenting cell (APC) in the context of class I MHC molecules. CD8 plays a role in T cell development and activation of mature T cells.

## Storage

Storage:

Store at 2-8°C. Avoid exposure to light. Stable for one year after shipment.

Storage Buffer:

PBS with 0.09% sodium azide and 0.5% BSA

For technical support and original validation data for this product please contact:

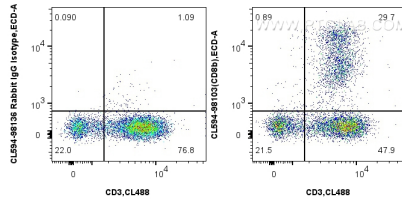
T: 4006900926

E: [Proteintech-CN@ptglab.com](mailto:Proteintech-CN@ptglab.com)

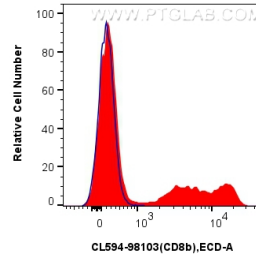
W: [ptgcn.com](http://ptgcn.com)

This product is exclusively available under Proteintech Group brand and is not available to purchase from any other manufacturer.

## Selected Validation Data



1x10<sup>6</sup> human PBMCs were surface stained with CoraLite® Plus 488 Anti-Human CD3 and 5 ul CoraLite®594 Anti-Human CD8b Rabbit RecAb (CL594-98103, Clone:241326A7), or CoraLite®594 Rabbit IgG Isotype Control RecAb (CL594-98136, Clone: 240953C9). Cells were fixed with 4% PFA and permeabilized with Flow Cytometry Perm Buffer (PF00011-C).



1x10<sup>6</sup> human PBMCs were surface stained with 5 ul CoraLite®594 Anti-Human CD8b Rabbit RecAb (CL594-98103, Clone:241326A7)(red), or CoraLite®594 Rabbit IgG Isotype Control RecAb (CL594-98136, Clone: 240953C9)(blue). Cells were fixed with 4% PFA and permeabilized with Flow Cytometry Perm Buffer (PF00011-C).