

For Research Use Only

CoraLite®594 Anti-Human IL3RA/CD123 Rabbit Recombinant Antibody

Catalog Number: CL594-98107



Basic Information

Catalog Number: CL594-98107	GenBank Accession Number: BC035407	Purification Method: Protein A purification
Concentration: 100tests, 5 ul/test	GeneID (NCBI): 3563	CloneNo.: 241268E3
Source: Rabbit	ENSEMBL Gene ID: ENSG00000185291	Recommended Dilutions: FC: 5 ul per 10 ⁶ cells in 100 µl suspension
Isotype: IgG	UNIPROT ID: P26951	Excitation/Emission maxima wavelengths: 588 nm / 604 nm
	Full Name: interleukin 3 receptor, alpha (low affinity)	
	Calculated MW: 378 aa, 43 kDa	

Applications

Tested Applications: FC	Positive Controls: FC : human PBMCs,
Species Specificity: human	

Background Information

Interleukin-3 receptor subunit alpha (IL3RA), also known as CD123, belongs to the cytokine receptor family. It is a glycoprotein containing an extracellular domain, involving a predicted Ig-like domain, two FnIII domains, a transmembrane domain and an intracellular domain (PMID: 24513123). IL3RA is expressed on hematopoietic progenitor cells, plasmacytoid dendritic cells, basophils, monocytes, some B cells, and in a variety of hematologic malignancies (PMID: 10527461; 34855461). IL-3 initially binds to IL3RA and subsequently recruits the beta chain (CD131) to form the high-affinity receptor, resulting in the activation of a series of signaling pathways including the JAK/STAT, Ras-MAPK, and phosphatidylinositol 3-kinase pathways (PMID: 29296749). IL-3R signaling regulates the proliferation, survival, and differentiation of hematopoietic cells.

Storage

Storage:
Store at 2-8°C. Avoid exposure to light. Stable for one year after shipment.
Storage Buffer:
PBS with 0.09% sodium azide and 0.5% BSA, pH7.3

For technical support and original validation data for this product please contact:

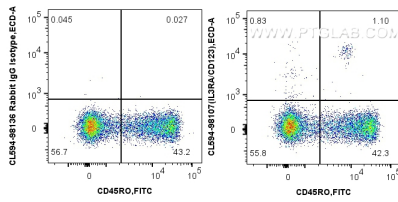
T: 4006900926

E: Proteintech-CN@ptglab.com

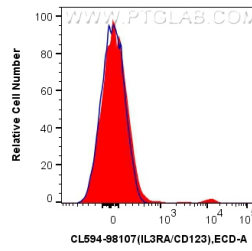
W: ptgcn.com

This product is exclusively available under Proteintech Group brand and is not available to purchase from any other manufacturer.

Selected Validation Data



1x10⁶ human PBMCs were surface stained with FITC Plus Anti-Human CD45RO, and 5 ul CoraLite®594 Anti-Human IL3RA/CD123 Rabbit RecAb (CL594-98107, Clone: 241268E3) or CoraLite®594 Rabbit IgG Isotype Control RecAb (CL594-98136, Clone: 240953C9). Cells were incubated with FC Receptor Block prior to staining. Cells were not fixed. Lymphocytes were gated.



1x10⁶ human PBMCs were surface stained with 5 ul CoraLite®594 Anti-Human IL3RA/CD123 Rabbit RecAb (CL594-98107, Clone: 241268E3) (red), or CoraLite®594 Rabbit IgG Isotype Control RecAb (CL594-98136, Clone: 240953C9) (blue). Cells were incubated with FC Receptor Block prior to staining. Cells were not fixed. Lymphocytes were gated.