

For Research Use Only

CoraLite®594 Anti-Human CD33 Rabbit Recombinant Antibody

Catalog Number: CL594-98184



Basic Information

Catalog Number:

CL594-98184

Concentration:

100 tests, 5 µl/test

Source:

Rabbit

Isotype:

IgG

GenBank Accession Number:

BC028152

GeneID (NCBI):

945

UNIPROT ID:

P20138

Full Name:

CD33 molecule

Calculated MW:

364 aa, 40 kDa

Purification Method:

Protein A purification

CloneNo.:

241711C12

Recommended Dilutions:

FC: 5 µl per 10⁶ cells in 100 µl suspension

Excitation/Emission maxima wavelengths:

588 nm / 604 nm

Applications

Tested Applications:

FC

Species Specificity:

human

Positive Controls:

FC : human PBMCs,

Background Information

CD33, also referred to as Siglec-3, is a 67-kDa glycosylated transmembrane protein of sialic acid-binding immunoglobulin-like lectin (siglec) family. CD33 is expressed on monocytes, myeloid progenitors, granulocytes, mast cells, some T cells. It may mediate cell-to-cell adhesion and act as a receptor that inhibits the proliferation of normal and leukemic myeloid cells.

Storage

Storage:

Store at 2-8°C. Avoid exposure to light. Stable for one year after shipment.

Storage Buffer:

PBS with 0.09% sodium azide and 0.5% BSA, pH7.3

For technical support and original validation data for this product please contact:

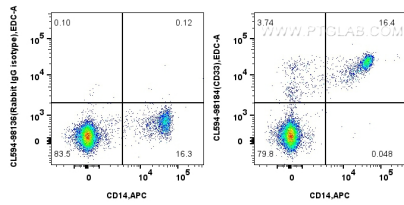
T: 4006900926

E: Proteintech-CN@ptglab.com

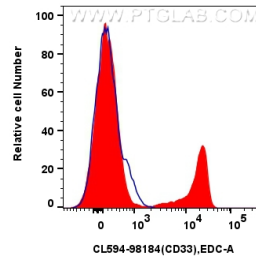
W: ptgcn.com

This product is exclusively available under Proteintech Group brand and is not available to purchase from any other manufacturer.

Selected Validation Data



1x10⁶ human PBMCs were surface stained with APC Anti-Human CD14 Rabbit Recombinant Antibody (APC-98040, Clone: 230332D7), and 5 ul CoraLite®594 Anti-Human CD33 Rabbit RecAb (CL594-98184, Clone: 241711C12) or CoraLite®594 Rabbit IgG Isotype Control RecAb (CL594-98136, Clone: 240953C9). Cells were incubated with FC Receptor Block prior to staining. Cells were not fixed.



1x10⁶ human PBMCs were surface stained with 5 ul CoraLite®594 Anti-Human CD33 Rabbit RecAb (CL594-98184, Clone: 241711C12) (red) or CoraLite®594 Rabbit IgG Isotype Control RecAb (CL594-98136, Clone: 240953C9) (blue). Cells were incubated with FC Receptor Block prior to staining. Cells were not fixed.