

For Research Use Only

CoraLite®594 Anti-Human CD68 Rabbit Recombinant Antibody

Catalog Number: CL594-98242



Basic Information

Catalog Number:

CL594-98242

Concentration:

100tests, 5 ul/test

Source:

Rabbit

Isotype:

IgG

GenBank Accession Number:

BC015557

GeneID (NCBI):

968

UNIPROT ID:

P34810

Full Name:

CD68 molecule

Calculated MW:

37 kDa

Purification Method:

Protein A purification

CloneNo.:

241810G1

Excitation/Emission maxima wavelengths:

588 nm / 604 nm

Applications

Tested Applications:

FC

Species Specificity:

human

Background Information

CD68 is a type I transmembrane glycoprotein that is highly expressed by human monocytes and tissue macrophages. It belongs to the lysosomal/endosomal-associated membrane glycoprotein (LAMP) family and primarily localizes to lysosomes and endosomes with a smaller fraction circulating to the cell surface. CD68 is also a member of the scavenger receptor family. It may play a role in phagocytic activities of tissue macrophages.

Storage

Storage:

Store at 2-8°C. Avoid exposure to light. Stable for one year after shipment.

Storage Buffer:

PBS with 0.09% sodium azide and 0.5% BSA.

For technical support and original validation data for this product please contact:

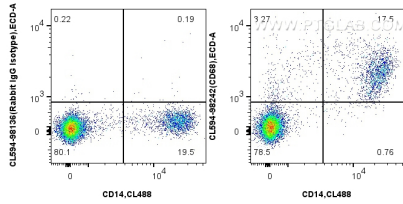
T: 4006900926

E: Proteintech-CN@ptglab.com

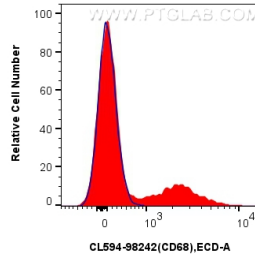
W: ptgcn.com

This product is exclusively available under Proteintech Group brand and is not available to purchase from any other manufacturer.

Selected Validation Data



1x10⁶ FC receptor blocked human PBMCs were surface stained with CoraLite® Plus 488 Anti-Human CD14, and 5 ul CoraLite® 594 Anti-Human CD68 Rabbit RecAb (CL594-98242, Clone: 241810G1) or CoraLite® 594 Rabbit IgG Isotype Control RecAb (CL594-98136, Clone: 240953C9). Cells were incubated with FC Receptor Block prior to staining. Cells were not fixed.



1x10⁶ FC receptor blocked human PBMCs were surface stained with CoraLite® Plus 488 Anti-Human CD14, and 5 ul CoraLite® 594 Anti-Human CD68 Rabbit RecAb (CL594-98242, Clone: 241810G1) (red) or CoraLite® 594 Rabbit IgG Isotype Control RecAb (CL594-98136, Clone: 240953C9) (blue). Cells were incubated with FC Receptor Block prior to staining. Cells were not fixed.