

For Research Use Only

# CoraLite®594 Anti-Human CD300a Rabbit Recombinant Antibody

Catalog Number: CL594-98268



## Basic Information

Catalog Number:

CL594-98268

Concentration:

100 tests, 5 µl/test

Source:

Rabbit

Isotype:

IgG

GenBank Accession Number:

NM\_007261.4

GeneID (NCBI):

11314

UNIPROT ID:

Q9UGN4-1

Full Name:

CD300a molecule

Calculated MW:

33 kDa

Purification Method:

Protein A purification

CloneNo.:

242131H4

Excitation/Emission maxima wavelengths:

588 nm / 604 nm

## Applications

Tested Applications:

FC

Species Specificity:

human

## Background Information

Human CD300a is a transmembrane protein, with an immunoglobulin (Ig)V-like extracellular domain and a cytoplasmic tail containing immunoreceptor tyrosine-based inhibitory motifs (ITIMs), providing the receptor with an inhibitory capacity. The relevance of the CD300a molecule in several pathological conditions has been highlighted by multiple studies. (PMID: 37762055)

## Storage

Storage:

Store at 2-8°C. Avoid exposure to light. Stable for one year after shipment.

Storage Buffer:

PBS with 0.09% sodium azide and 0.5% BSA

For technical support and original validation data for this product please contact:

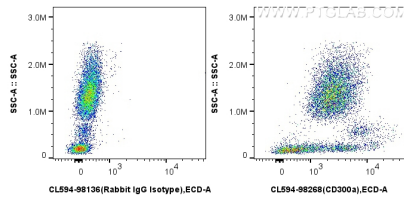
T: 4006900926

E: [Proteintech-CN@ptglab.com](mailto:Proteintech-CN@ptglab.com)

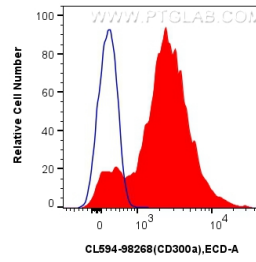
W: [ptgcn.com](http://ptgcn.com)

This product is exclusively available under Proteintech Group brand and is not available to purchase from any other manufacturer.

## Selected Validation Data



1x10<sup>6</sup> FC receptor blocked human peripheral blood leukocytes were surface stained with 5 ul CoraLite®594 Anti-Human CD300a Rabbit RecAb (CL594-98268, Clone: 242131H4) or 5 ul CoraLite®594 Rabbit IgG Isotype Control RecAb (CL594-98136, Clone: 240953C9). Cells were not fixed.



1x10<sup>6</sup> FC receptor blocked human peripheral blood leukocytes were surface stained with 5 ul CoraLite®594 Anti-Human CD300a Rabbit RecAb (CL594-98268, Clone: 242131H4) (red) or CoraLite®594 Rabbit IgG Isotype Control RecAb (CL594-98136, Clone: 240953C9) (blue). Cells were not fixed.