

For Research Use Only

# FcZero-rAb® CoraLite® Plus 594 Anti-Human CD21 (BU32) Rabbit Recombinant Antibody

Catalog Number: CL594-FcA65591



## Basic Information

**Catalog Number:**

CL594-FcA65591

**Concentration:**

100tests, 5 ul/test

**Source:**

Rabbit

**Isotype:**

IgG

**GenBank Accession Number:**

BC136394

**GeneID (NCBI):**

1380

**ENSEMBL Gene ID:**

ENSG00000117322

**UNIPROT ID:**

P20023

**Full Name:**

complement component (3d/Epstein Barr virus) receptor 2

**Calculated MW:**

1092 aa, 119 kDa

**Purification Method:**

Protein A purification

**CloneNo.:**

BU32

**Recommended Dilutions:**

FC: 5 ul per 10<sup>6</sup> cells in a 100 µl suspension

**Excitation/Emission maxima wavelengths:**

588 nm / 604 nm

## Applications

**Tested Applications:**

FC

**Species Specificity:**

human

**Positive Controls:**

FC : human PBMCS,

## Background Information

CD21, also known as complement receptor type 2 (CR2), complement C3d receptor, and Epstein-Barr virus receptor, is a transmembrane protein that contains a small cytoplasmic domain, a transmembrane region and an extracellular domain consisting of 15 tandem short consensus repeat sequences (PMID: 6230668; 2551147). It is expressed on B cells, follicular dendritic cells, thymocytes and a subset of peripheral T cells (PMID: 26119182). CD21 binds complement fragments C3d, C3dg and iC3b and acts as a receptor for the Epstein-Barr virus (PMID: 7753047). On B cells, together with CD19 and CD81, CD21 forms a complex that functions as a co-receptor to the BCR (PMID: 7542009). It is involved in B cells activation and functions.

## Storage

**Storage:**

Store at 2-8°C. Avoid exposure to light. Stable for one year after shipment.

**Storage Buffer:**

PBS with 0.09% sodium azide and 0.5% BSA, pH7.3

For technical support and original validation data for this product please contact:

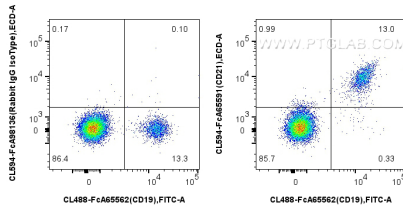
T: 4006900926

E: Proteintech-CN@ptglab.com

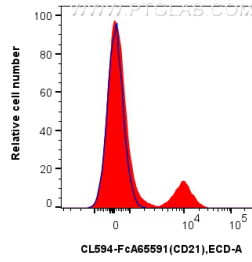
W: ptgcn.com

**This product is exclusively available under Proteintech Group brand and is not available to purchase from any other manufacturer.**

## Selected Validation Data



1x10<sup>6</sup> human PBMCs were surface stained with CoraLite® Plus 488 Anti-Human CD19 (4G7), and 5 ul CoraLite® Plus 594 Anti-Human CD21 (BU32) Rabbit IgG RecAb (CL594-FcA65591, Clone: BU32) or Rabbit IgG Isotype Control RecAb (CL594-FcA98136, Clone: 240953C9). Cells were not fixed.



1x10<sup>6</sup> human PBMCs were surface stained with 5 ul CoraLite® Plus 594 Anti-Human CD21 (BU32) Rabbit IgG RecAb (CL594-FcA65591, Clone: BU32) (red) or Rabbit IgG Isotype Control RecAb (CL594-FcA98136, Clone: 240953C9) (blue). Cells were not fixed.