

For Research Use Only

FcZero-rAb™ CoraLite® Plus 594 Anti-Human CD8 (SK1) Rabbit Recombinant Antibody

Catalog Number: CL594-FcA65630



Basic Information

Catalog Number:

CL594-FcA65630

Concentration:

100tests, 5 ul/test

Source:

Rabbit

Isotype:

IgG

GenBank Accession Number:

BC025715

GeneID (NCBI):

925

ENSEMBL Gene ID:

ENSG00000153563

UNIPROT ID:

P01732

Full Name:

CD8a molecule

Calculated MW:

235 aa, 26 kDa

Purification Method:

Protein A purification

CloneNo.:

SK1

Recommended Dilutions:

FC: 5 ul per 10⁶ cells in a 100 µl suspension

Excitation/Emission maximum wavelengths:

588 nm / 604 nm

Applications

Tested Applications:

FC

Species Specificity:

human, monkey, non-human primates

Positive Controls:

FC : human PBMCs,

Background Information

CD8 is a transmembrane glycoprotein composed of two disulfide-linked chains. It can be present as a homodimer of CD8 α or as a heterodimer of CD8 α and CD8 β (PMID: 3264320; 8253791). CD8 is found on most thymocytes. The majority of class I-restricted T cells express mostly the CD8 α β heterodimer while CD8 α α homodimers alone have been found on some gut intraepithelial T cells, on some T cell receptor (TCR) γ δ T cells and on NK cells (PMID: 2111591; 1831127; 8420975). CD8 acts as a co-receptor that binds to MHC class-I and participates in cytotoxic T cell activation (PMID: 8499079). During T cell development, CD8 is required for positive selection of CD4-/CD8+ T cells (PMID: 1968084).

Storage

Storage:

Store at 2-8°C. Avoid exposure to light. Stable for one year after shipment.

Storage Buffer:

PBS with 0.09% sodium azide and 0.5% BSA, pH7.3

For technical support and original validation data for this product please contact:

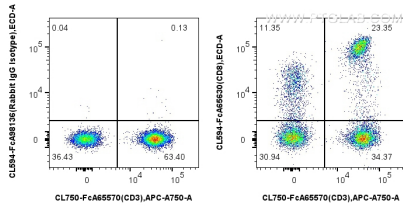
T: 4006900926

E: Proteintech-CN@ptglab.com

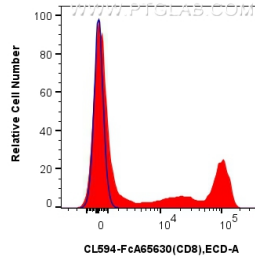
W: ptgcn.com

This product is exclusively available under Proteintech Group brand and is not available to purchase from any other manufacturer.

Selected Validation Data



1x10⁶ human PBMCs were surface stained with FcZero-rAb™ CoraLite® Plus 750 Anti-Human CD3 (UCHT1), and 5 ul CoraLite® Plus 594 Anti-Human CD8 (SK1) Rabbit IgG RecAb (CL594-FcA65630, Clone:SK1) or CoraLite® 594 Rabbit IgG Isotype Control RecAb (CL594-FcA98136, Clone: 240953C9). Cells were not fixed. Lymphocytes were gated.



1x10⁶ human PBMCs were surface stained with 5 ul CoraLite® Plus 594 Anti-Human CD8 (SK1) Rabbit IgG RecAb (CL594-FcA65630, Clone:SK1) (red) or CoraLite® 594 Rabbit IgG Isotype Control RecAb (CL594-FcA98136, Clone: 240953C9) (blue). Cells were not fixed. Lymphocytes were gated.