

For Research Use Only

# FcZero-rAb® CoraLite® Plus 594 Anti-Mouse CD11b (M1/70) Rabbit Recombinant Antibody

Catalog Number: CL594-FcA65672



## Basic Information

**Catalog Number:**

CL594-FcA65672

**Concentration:**

100ug, 500 ug/ml

**Source:**

Rabbit

**Isotype:**

IgG

**GenBank Accession Number:**

BC156991

**GeneID (NCBI):**

16409

**UNIPROT ID:**

E9Q604

**Full Name:**

integrin alpha M

**Calculated MW:**

127 kDa

**Purification Method:**

Protein A purification

**CloneNo.:**

M1/70

**Recommended Dilutions:**

FC: 0.25 ug per 10<sup>6</sup> cells in a 100 µl suspension

**Excitation/Emission maxima wavelengths:**

588 nm / 604 nm

## Applications

**Tested Applications:**

FC

**Species Specificity:**

human, mouse, rabbit, monkey, guinea pig, non-human primates

**Positive Controls:**

FC : mouse bone marrow cells,

## Background Information

Integrins are cell adhesion receptors that are heterodimers composed of non-covalently associated  $\alpha$  and  $\beta$  subunits (PMID: 9779984). CD11b, also known as Integrin alpha M or CR3A, belongs to the integrin alpha chain family. CD11b forms an  $\alpha / \beta$  heterodimer with CD18 (integrin  $\beta$  2). CD11b/CD18 is implicated in various adhesive interactions of monocytes, macrophages and granulocytes as well as in mediating the uptake of complement-coated particles and pathogens (PMID: 9558116; 20008295). CD11b/CD18 is a receptor for the complement protein fragment iC3b, and is also a receptor for fibrinogen, factor X and ICAM1 (PMID: 2971974; 15485828).

## Storage

**Storage:**

Store at 2-8°C. Avoid exposure to light. Stable for one year after shipment.

**Storage Buffer:**

PBS with 0.09% sodium azide, pH7.3

For technical support and original validation data for this product please contact:

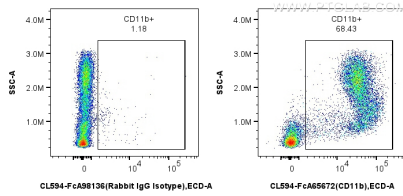
T: 4006900926

E: Proteintech-CN@ptglab.com

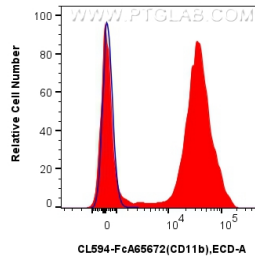
W: ptgcn.com

**This product is exclusively available under Proteintech Group brand and is not available to purchase from any other manufacturer.**

## Selected Validation Data



1x10<sup>6</sup> mouse bone marrow cells were surface stained with 0.25 ug CoraLite® Plus 594 Anti-Mouse CD11b (M1/70) Rabbit IgG RecAb (CL594-FcA65672, Clone: M1/70) or CoraLite®594 Rabbit IgG Isotype Control RecAb (CL594-FcA98136, Clone: 240953C9). Cells were not fixed.



1x10<sup>6</sup> mouse bone marrow cells were surface stained with 0.25 ug CoraLite® Plus 594 Anti-Mouse CD11b (M1/70) Rabbit IgG RecAb (CL594-FcA65672, Clone: M1/70) (red) or CoraLite®594 Rabbit IgG Isotype Control RecAb (CL594-FcA98136, Clone: 240953C9) (blue). Cells were not fixed.