

For Research Use Only

# CoraLite® Plus 647-conjugated Cortactin Polyclonal antibody



Catalog Number: CL647-11381

## Basic Information

<b>Catalog Number:</b> CL647-11381	<b>GenBank Accession Number:</b> BC008799	<b>Purification Method:</b> Antigen affinity purification
<b>Size:</b> 1000 µg/mL	<b>GeneID (NCBI):</b> 2017	<b>Excitation/Emission maxima wavelengths:</b> 654 nm / 674 nm
<b>Source:</b> Rabbit	<b>UNIPROT ID:</b> Q14247	
<b>Isotype:</b> IgG	<b>Full Name:</b> cortactin	
<b>Immunogen Catalog Number:</b> AG1940	<b>Calculated MW:</b> 57 kDa	
	<b>Observed MW:</b> 80 kDa, 85 kDa	

## Applications

**Tested Applications:**  
FC (Intra)

**Species Specificity:**  
human, mouse, rat

## Background Information

Cortactin, encoded by CTTN gene (formerly EMS1), was originally identified as a substrate of the Src kinase. It is a cytoskeletal protein that interacts with F-actin and Arp2/3 complex and plays an important role in regulation of actin assembly and cytoskeleton dynamics. Overexpression of cortactin increases cell migration, and is thought to contribute to the invasive phenotype of breast cancer and several other tumors. Three isoforms of cortactin exist due to the alternative splicing. Although cortactin has a predicted molecular weight around 65 kDa, it was detected as 80/85 doublet or as multiple bands between 75 and 85 kDa on SDS-PAGE (PMID: 18607838, 19089942).

## Storage

**Storage:**  
Store at -20°C. Avoid exposure to light. Stable for one year after shipment.

**Storage Buffer:**  
PBS with 50% Glycerol, 0.05% Proclin300, 0.5% BSA, pH 7.3.

**Aliquoting is unnecessary for -20°C storage**

For technical support and original validation data for this product please contact:

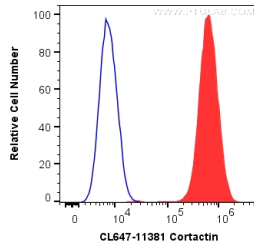
T: 4006900926

E: [Proteintech-CN@ptglab.com](mailto:Proteintech-CN@ptglab.com)

W: [ptgcn.com](http://ptgcn.com)

**This product is exclusively available under Proteintech Group brand and is not available to purchase from any other manufacturer.**

## Selected Validation Data



1X10<sup>6</sup> HeLa cells were intracellularly stained with 0.2 ug Coralite® Plus 647 Anti-Human Cortactin (CL647-11381) (red), or 0.2 ug isotype control (blue). Cells were fixed with 4% PFA and permeabilized with Flow Cytometry Perm Buffer (PF00011-C).