

For Research Use Only

# CoraLite® Plus 647-conjugated 14-3-3 Epsilon Polyclonal antibody



Catalog Number: CL647-11648

Featured Product

## Basic Information

Catalog Number:

CL647-11648

Size:

1000 µg/ml

Source:

Rabbit

Isotype:

IgG

Immunogen Catalog Number:

AG2247

GenBank Accession Number:

BC000179

GeneID (NCBI):

7531

UNIPROT ID:

P62258

Full Name:

tyrosine 3-monooxygenase/tryptophan 5-monooxygenase activation protein, epsilon polypeptide

Calculated MW:

255 aa, 29 kDa

Observed MW:

29-32 kDa

Purification Method:

Antigen affinity purification

Excitation/Emission maxima wavelengths:

654 nm / 674 nm

## Applications

Tested Applications:

FC (Intra)

Species Specificity:

human, mouse, rat

## Background Information

14-3-3 Epsilon (also known as YWHAE) is a member of 14-3-3 proteins which were the first phosphoserine/phosphothreonine-binding proteins to be discovered. 14-3-3 family members interact with a wide spectrum of proteins and possess diverse functions. Mammals express seven distinct 14-3-3 isoforms (gamma, epsilon, beta, zeta, sigma, theta, tau) that form multiple homo- and hetero- dimers. 14-3-3 proteins display the highest expression levels in the brain, and have been implicated in several neurodegenerative diseases, including Alzheimer's disease and amyotrophic lateral sclerosis. This antibody was raised against full-length 14-3-3 Epsilon.

## Storage

Storage:

Store at -20°C. Avoid exposure to light. Stable for one year after shipment.

Storage Buffer:

PBS with 50% Glycerol, 0.05% Proclin300, 0.5% BSA, pH 7.3.

Aliquoting is unnecessary for -20°C storage

For technical support and original validation data for this product please contact:

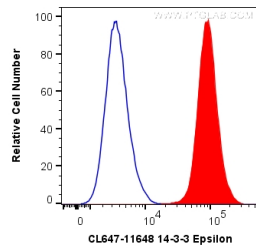
T: 4006900926

E: [Proteintech-CN@ptglab.com](mailto:Proteintech-CN@ptglab.com)

W: [ptgcn.com](http://ptgcn.com)

This product is exclusively available under Proteintech Group brand and is not available to purchase from any other manufacturer.

## Selected Validation Data



1X10<sup>6</sup> HepG2 cells were intracellularly stained with 0.2 ug CoraLite® Plus 647 Anti-Human 14-3-3 Epsilon (CL647-11648) (red), or 0.2 ug CL647-30000 Rabbit IgG (blue). Cells were fixed with 4% PFA and permeabilized with Flow Cytometry Perm Buffer (PF00011-C).