

For Research Use Only

# CoraLite® Plus 647-conjugated IgG Lambda Light Chain Polyclonal antibody



Catalog Number: **CL647-20758**

## Basic Information

Catalog Number: CL647-20758	GenBank Accession Number: BC007782	Purification Method: Antigen affinity purification
Size: 1000 µg/ml	GeneID (NCBI): 3537	Recommended Dilutions: IF 1:50-1:500
Source: Rabbit	Full Name: immunoglobulin lambda constant 1 (Mcg marker)	Excitation/Emission maxima wavelengths: 654 nm / 674 nm
Isotype: IgG	Calculated MW: 233 aa, 25 kDa	
Immunogen Catalog Number: AG14693	Observed MW: 25 kDa	

## Applications

Tested Applications:

IF-P

Species Specificity:

human

Positive Controls:

IF : human tonsillitis tissue,

## Background Information

This antibody detects the lambda light chain of human IgG.

## Storage

Storage:

Store at -20°C. Avoid exposure to light.

Storage Buffer:

PBS with 50% Glycerol, 0.05% Proclin300, 0.5% BSA, pH 7.3.

Aliquoting is unnecessary for -20°C storage

For technical support and original validation data for this product please contact:

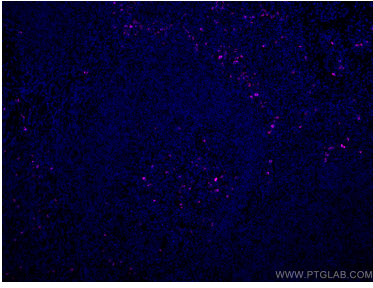
T: 4006900926

E: [Proteintech-CN@ptglab.com](mailto:Proteintech-CN@ptglab.com)

W: [ptgcn.com](http://ptgcn.com)

This product is exclusively available under Proteintech Group brand and is not available to purchase from any other manufacturer.

## Selected Validation Data



Immunofluorescent analysis of (4% PFA) fixed human tonsillitis tissue using CoraLite® Plus 647 IgG Lambda Light Chain antibody (CL647-20758) at dilution of 1:200.