

For Research Use Only

# CoraLite® Plus 647-conjugated DLL3 Polyclonal antibody



Catalog Number: CL647-25535

## Basic Information

Catalog Number:

CL647-25535

Size:

1000 µg/ml

Source:

Rabbit

Isotype:

IgG

Immunogen Catalog Number:

AG21965

GenBank Accession Number:

BC000218

GeneID (NCBI):

10683

UNIPROT ID:

Q9NYJ7

Full Name:

delta-like 3 (Drosophila)

Calculated MW:

65 kDa

Observed MW:

65 kDa

Purification Method:

Antigen affinity purification

Recommended Dilutions:

IF-P 1:200-1:800

Excitation/Emission maxima  
wavelengths:

654 nm / 674 nm

## Applications

Tested Applications:

IF-P

Species Specificity:

human, mouse

Positive Controls:

IF-P: mouse brain tissue,

## Background Information

The Delta-Notch pathway is an evolutionarily conserved signaling pathway which controls a broad range of developmental processes including cell fate determination, terminal differentiation and proliferation (PMID: 22353464). In mammals, four Notch receptors (NOTCH1-4) and five activating canonical ligands (JAGGED1, JAGGED2, DLL1, DLL3 and DLL4) have been described (PMID: 22353464). DLL3 is an inhibitory ligand of the Notch signaling pathway that is predominantly localizes to the Golgi apparatus (PMID: 17664336) in normal condition. Normal tissue expression of DLL3 is highest in fetal brain, and DLL3 plays a key role in somitogenesis in the paraxial mesoderm (PMID: 26311731). It has been reported that DLL3 is expressed on the surface of tumor cells of small cell lung cancer (SCLC) and high-grade neuroendocrine carcinomas (LCNEC) and has emerged as a novel therapeutic target (PMID: 26311731; 28487384).

## Storage

Storage:

Store at -20°C. Avoid exposure to light. Stable for one year after shipment.

Storage Buffer:

PBS with 50% Glycerol, 0.05% Proclin300, 0.5% BSA, pH 7.3.

Aliquoting is unnecessary for -20°C storage

For technical support and original validation data for this product please contact:

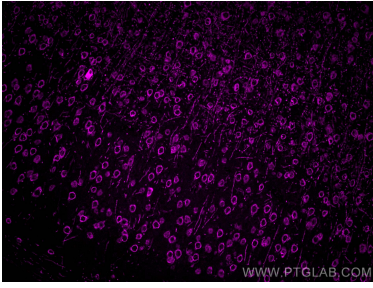
T: 4006900926

E: [Proteintech-CN@ptglab.com](mailto:Proteintech-CN@ptglab.com)

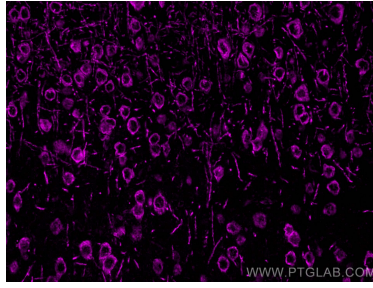
W: [ptgcn.com](http://ptgcn.com)

This product is exclusively available under Proteintech Group brand and is not available to purchase from any other manufacturer.

## Selected Validation Data



Immunofluorescent analysis of (4% PFA) fixed mouse brain tissue using CoraLite® Plus 647 DLL3 antibody (CL647-25535) at dilution of 1:400.



Immunofluorescent analysis of (4% PFA) fixed mouse brain tissue using CoraLite® Plus 647 DLL3 antibody (CL647-25535) at dilution of 1:400.