

For Research Use Only

CoraLite® Plus 647-conjugated CD20 Monoclonal antibody



Catalog Number: CL647-60271

Basic Information

Catalog Number:

CL647-60271

Size:

1000 µg/ml

Source:

Mouse

Isotype:

IgG2b

Immunogen Catalog Number:

AG17309

GenBank Accession Number:

BC002807

GeneID (NCBI):

931

UNIPROT ID:

P11836

Full Name:

membrane-spanning 4-domains,
subfamily A, member 1

Calculated MW:

297 aa, 33 kDa

Purification Method:

Protein A purification

CloneNo.:

4A7G3

Recommended Dilutions:

IF 1:50-1:500

Excitation/Emission maxima
wavelengths:

654 nm / 674 nm

Applications

Tested Applications:

FC (Intra), IF/ICC, IF-P

Species Specificity:

human

Positive Controls:

IF : human tonsillitis tissue, human lung cancer tissue

Background Information

CD20 is a 33-37 kDa transmembrane phosphoprotein. CD20 is a B-lymphocyte surface molecule that is widely expressed during B-cell ontogeny, from early pre-B-cell developmental stages until final differentiation into plasma cells. CD20 functions as calcium-permeable cation channel. It is involved in the regulation of B-cell activation and proliferation. CD20 serves as a useful target for antibody-mediated therapeutic depletion of B-cells.

Storage

Storage:

Store at -20°C. Avoid exposure to light. Stable for one year after shipment.

Storage Buffer:

PBS with 50% Glycerol, 0.05% Proclin300, 0.5% BSA, pH 7.3.

Aliquoting is unnecessary for -20°C storage

For technical support and original validation data for this product please contact:

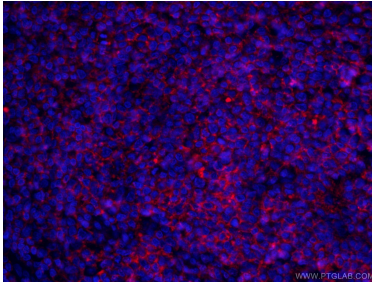
T: 4006900926

E: Proteintech-CN@ptglab.com

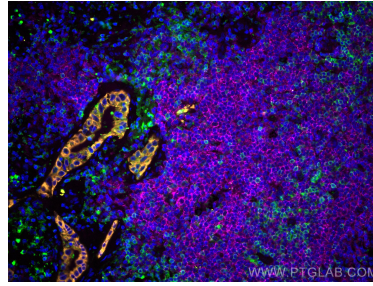
W: ptgcn.com

This product is exclusively available under Proteintech Group brand and is not available to purchase from any other manufacturer.

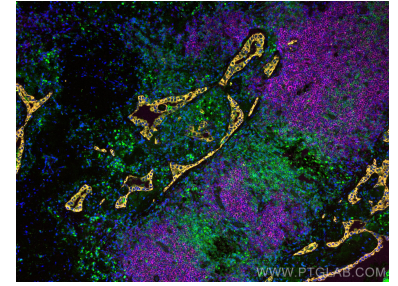
Selected Validation Data



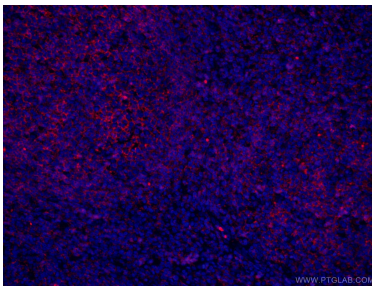
Immunofluorescent analysis of (4% PFA) fixed human tonsillitis tissue using CL647-60271 (CD20 antibody) at dilution of 1:100 and CoraLite488-Conjugated AffiniPure Goat Anti-Mouse IgG(H+L).



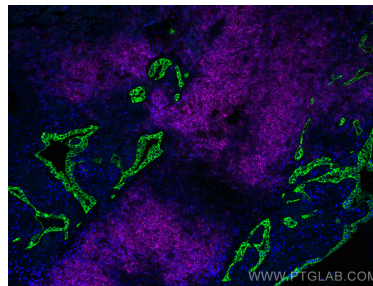
Immunofluorescent analysis of (4% PFA) fixed human lung cancer tissue using CoraLite® Plus 647 CD20 antibody (CL647-60271, Clone: 4A7G3) at dilution of 1:100, CoraLite®488 CD3 antibody (CL488-60181, Clone: 3F3A1, green), CoraLite®555 pan-keratin antibody (CL555-26411, orange).



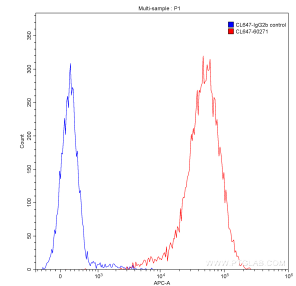
Immunofluorescent analysis of (4% PFA) fixed human lung cancer tissue using CoraLite® Plus 647 CD20 antibody (CL647-60271, Clone: 4A7G3) at dilution of 1:100, CoraLite®488 CD3 antibody (CL488-60181, Clone: 3F3A1, green), CoraLite®555 pan-keratin antibody (CL555-26411, orange).



Immunofluorescent analysis of (4% PFA) fixed human tonsillitis tissue using CL647-60271 (CD20 antibody) at dilution of 1:100 and CoraLite488-Conjugated AffiniPure Goat Anti-Mouse IgG(H+L).



Immunofluorescent analysis of (4% PFA) fixed human lung cancer tissue using CoraLite® Plus 647 CD20 antibody (CL647-60271, Clone: 4A7G3) at dilution of 1:100, CoraLite®488 pan-keratin antibody (CL488-26411, green).



1X10⁶ Raji cells were stained with 0.20 ug CoraLite® Plus 647-conjugated Anti-Human CD20 (CL647-60271, Clone:4A7G3) (red) or 0.20 ug control antibody (blue). Fixed with90% MeOH.