

For Research Use Only

# CoraLite® Plus 647 Anti-Human CD161 (HP-3G10)



Catalog Number: **CL647-65115**

## Basic Information

Catalog Number:

CL647-65115

Size:

100tests, 5 µl/test

Source:

Mouse

Isotype:

IgG1, kappa

GenBank Accession Number:

BC114516

GeneID (NCBI):

3820

ENSEMBL Gene ID:

ENSG00000111796

UNIPROT ID:

Q12918

Full Name:

killer cell lectin-like receptor  
subfamily B, member 1

Calculated MW:

225 aa, 25 kDa

Purification Method:

Affinity purification

CloneNo.:

HP-3G10

Excitation/Emission maxima  
wavelengths:

654 nm / 674 nm

## Applications

Tested Applications:

FC

Species Specificity:

Human

## Background Information

### Storage

Storage:

Store at 2-8°C. Avoid exposure to light. Stable for one year after shipment.

Storage Buffer:

PBS with 0.1% sodium azide and 0.5% BSA, pH 7.3.

For technical support and original validation data for this product please contact:

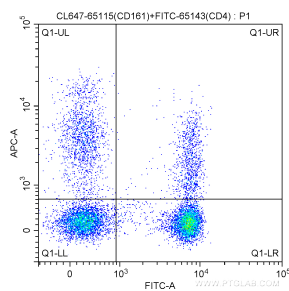
T: 4006900926

E: [Proteintech-CN@ptglab.com](mailto:Proteintech-CN@ptglab.com)

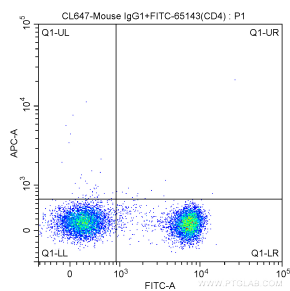
W: [ptgcn.com](http://ptgcn.com)

This product is exclusively available under Proteintech Group brand and is not available to purchase from any other manufacturer.

## Selected Validation Data



100 ul human peripheral blood were surface stained with FITC-Anti-Human CD4 (FITC-65143, Clone: RPA-T4) and 5.00 ul CoraLite® Plus 647-conjugated Anti-Human CD161 (CL647-65115, Clone:HP-3G10). Lymphocytes were gated for analysis. Cells were not fixed.



100 ul human peripheral blood were surface stained with FITC-Anti-Human CD4 (FITC-65143, Clone: RPA-T4) and CoraLite® Plus 647-conjugated Mouse IgG1 isotype control antibody. Lymphocytes were gated for analysis. Cells were not fixed.