

For Research Use Only

CoraLite® Plus 647 Anti-Mouse CD45R (B220) (RA3-6B2)



Catalog Number: CL647-65139

Basic Information

Catalog Number: CL647-65139	GenBank Accession Number: BC028512	Purification Method: Affinity purification
Size: 100ug, 0.5 mg/ml	GeneID (NCBI): 19264	CloneNo.: RA3-6B2
Source: Rat	UNIPROT ID: P06800	Recommended Dilutions: IF 1:200-1:800
Isotype: IgG2a, kappa	Full Name: protein tyrosine phosphatase, receptor type, C	Excitation/Emission maxima wavelengths: 654 nm / 674 nm

Applications

Tested Applications: FC, IF/ICC	Positive Controls: IF : mouse splenocytes,
Species Specificity: Human, Mouse	

Background Information

CD45, also known as protein tyrosine phosphatase, receptor type C, is a type I transmembrane protein expressed on the surface of all haematopoietic cells with the exception of erythrocytes and platelets (PMID: 3489673; 28615666). CD45 is a pan-haematopoietic cell marker and has been shown to be essential for T- and B-cell activation and signalling (PMID: 9429890; 16378097). CD45R (B220) is an isoform of CD45, expressed on murine B-lineage cells (except for plasma cells) and on a small sub-population of T cells (PMID: 6975314; 15712182). It is commonly used as a pan B-cell marker in mice. CD45R is also expressed on activated T cells and NK cell subsets (PMID: 7514808; 17923504). The RA3-6B2 clone reacts with human and mouse CD45R.

Storage

Storage:
Store at 2-8°C. Avoid exposure to light. Stable for one year after shipment.
Storage Buffer:
PBS with 0.1% sodium azide and 0.5% BSA, pH 7.3.

For technical support and original validation data for this product please contact:

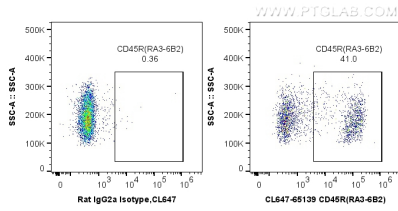
T: 4006900926

E: Proteintech-CN@ptglab.com

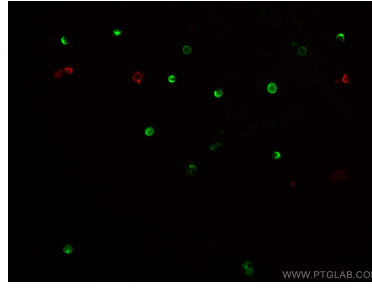
W: ptgcn.com

This product is exclusively available under Proteintech Group brand and is not available to purchase from any other manufacturer.

Selected Validation Data



1X10⁶ mouse splenocytes were surface stained with 0.5 ug Coralite® Plus 647 Anti-Mouse CD45R (B220) (CL647-65139, Clone:RA3-6B2), or 0.5 ug Control Antibody. Cells were not fixed.



Immunofluorescent analysis of mouse splenocytes using Coralite® Plus 647-conjugated CD45R (B220) antibody (CL647-65139, Clone: RA3-6B2, red) at dilution of 1:400, and Coralite® 488-conjugated CD3 antibody (CL488-65077, Clone: 17A2, green).