

For Research Use Only

# CoraLite® Plus 647 Anti-Human CD206 (15-2)



Catalog Number: CL647-65155

## Basic Information

**Catalog Number:**

CL647-65155

**Size:**

100tests, 5 µl/test

**Source:**

Mouse

**Isotype:**

IgG1, kappa

**GenBank Accession Number:**

NM\_002438

**GeneID (NCBI):**

4360

**UNIPROT ID:**

P22897

**Full Name:**

mannose receptor, C type 1

**Calculated MW:**

166 kDa

**Purification Method:**

Purified by protein-A affinity chromatography

**CloneNo.:**

15-2

**Excitation/Emission maximum wavelengths:**

654 nm / 674 nm

## Applications

**Tested Applications:**

FC

**Species Specificity:**

Human

## Background Information

CD206, also named as MMR, CLEC13D and MRC1, is a type I membrane receptor that mediates the endocytosis of glycoproteins by macrophages. CD206 has been shown to bind high-mannose structures on the surface of potentially pathogenic viruses, bacteria, and fungi so that they can be neutralized by phagocytic engulfment. CD206 is a 170 kDa transmembrane protein which contains 5 domains: an amino-terminal cysteine-rich region, a fibronectin type II repeat, a series of eight tandem lectin-like carbohydrate recognition domains (responsible for the recognition of mannose and fucose), a transmembrane domain, and an intracellular carboxy-terminal tail. It is expressed on most tissue macrophages, in vitro derived dendritic cells, lymphatic and sinusoidal endothelia.

## Storage

**Storage:**

Store at 2-8°C. Avoid exposure to light. Stable for one year after shipment.

**Storage Buffer:**

PBS with 0.09% sodium azide and 0.5% BSA.

For technical support and original validation data for this product please contact:

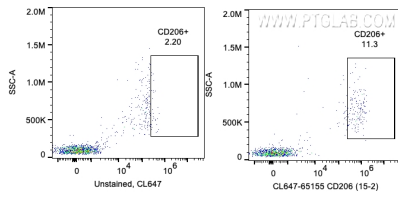
T: 4006900926

E: [Proteintech-CN@ptglab.com](mailto:Proteintech-CN@ptglab.com)

W: [ptgcn.com](http://ptgcn.com)

**This product is exclusively available under Proteintech Group brand and is not available to purchase from any other manufacturer.**

## Selected Validation Data



1X10<sup>6</sup> GM-CSF treated human PBMCs (red) or non-treated cells (blue) were surface stained with 5ul CoraLite® Plus 647 Anti-Human CD206 (CL647-65155, Clone:15-2). Cells were not fixed. Monocytes are gated.