

For Research Use Only

# CoraLite® Plus 647 Anti-Human CD1c (L161)



Catalog Number: CL647-65176

## Basic Information

Catalog Number:

CL647-65176

Size:

100 tests, 5 µl/test

Source:

Mouse

Isotype:

IgG1, kappa

GenBank Accession Number:

BC126465

GeneID (NCBI):

911

UNIPROT ID:

P29017

Full Name:

CD1c molecule

Purification Method:

Affinity purification

CloneNo.:

L161

Excitation/Emission maxima wavelengths:

654 nm / 674 nm

## Applications

Tested Applications:

FC

Species Specificity:

Human

## Background Information

### Storage

Storage:

Store at 2-8°C. Avoid exposure to light. Stable for one year after shipment.

Storage Buffer:

PBS with 0.09% sodium azide and 0.5% BSA.

For technical support and original validation data for this product please contact:

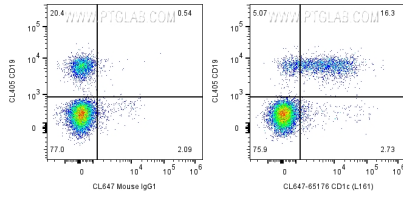
T: 4006900926

E: [Proteintech-CN@ptglab.com](mailto:Proteintech-CN@ptglab.com)

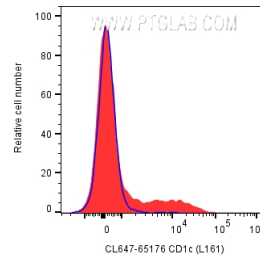
W: [ptgcn.com](http://ptgcn.com)

This product is exclusively available under Proteintech Group brand and is not available to purchase from any other manufacturer.

## Selected Validation Data



1x10<sup>6</sup> human PBMCs were surface stained with CoraLite® Plus 405 Anti-Human CD19 and 5 ul CoraLite® Plus 647 Anti-Human CD1c (L161) (CL647-65176) or CoraLite® Plus 647 Mouse IgG1 Isotype Control. Cells were not fixed.



1x10<sup>6</sup> human PBMCs were surface stained with 5 ul CoraLite® Plus 647 Anti-Human CD1c (L161) (CL647-65176) or CoraLite® Plus 647 Mouse IgG1 Isotype Control. Cells were not fixed.