

For Research Use Only

# CoraLite® Plus 647 Anti-Human LRP1 (5A6)



Catalog Number: CL647-65233

## Basic Information

**Catalog Number:**

CL647-65233

**Size:**

100 tests, 5 µl/test

**Source:**

Mouse

**Isotype:**

IgG2b

**GenBank Accession Number:**

BC045107

**GeneID (NCBI):**

4035

**UNIPROT ID:**

Q07954

**Full Name:**

low density lipoprotein-related protein 1 (alpha-2-macroglobulin receptor)

**Calculated MW:**

505 kDa

**Purification Method:**

Affinity purification

**CloneNo.:**

5A6

**Excitation/Emission maxima wavelengths:**

654 nm / 674 nm

## Applications

**Tested Applications:**

FC

**Species Specificity:**

Human

## Background Information

LRP1 (Pro-low-density lipoprotein receptor-related protein 1), also known as A2MR, APOER and CD91, is a type I transmembrane protein that belongs to the LDLR family. LRP1 is synthesized as a transmembrane glycosylated precursor of 600 kDa, and is subsequently cleaved to generate a large 515-kDa N-terminal extracellular subunit and an 85-kDa C-terminal transmembrane subunit, which are noncovalently associated with one another (PMID: 2112085; 8546712). LRP1 is a multifunctional receptor involved in the clearance of a large number of diverse ligands and modulating various cellular processes. LRP1 is implicated in conditions such as atherosclerosis, cancer and neurodegenerative diseases (PMID: 28381441).

## Storage

**Storage:**

Store at 2-8°C. Avoid exposure to light. Stable for one year after shipment.

**Storage Buffer:**

PBS with 0.09% sodium azide.

For technical support and original validation data for this product please contact:

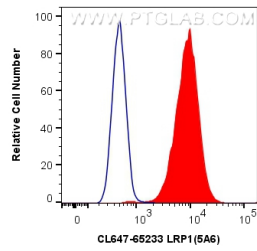
T: 4006900926

E: [Proteintech-CN@ptglab.com](mailto:Proteintech-CN@ptglab.com)

W: [ptgcn.com](http://ptgcn.com)

**This product is exclusively available under Proteintech Group brand and is not available to purchase from any other manufacturer.**

## Selected Validation Data



1X10<sup>6</sup> U-87 MG cells were surface stained with 5  $\mu$ l CoraLite® Plus 647 Anti-Human LRP1 (CL647-65233, Clone:5A6) (red) or Control Antibody. Cells were not fixed.