

For Research Use Only

# CoraLite® Plus 647 Anti-Human CD56 (B-A19)



Catalog Number: CL647-65264

## Basic Information

<b>Catalog Number:</b> CL647-65264	<b>GenBank Accession Number:</b> BC014205	<b>Purification Method:</b> Affinity purification
<b>Size:</b> 100tests, 5 µl/test	<b>GeneID (NCBI):</b> 4684	<b>CloneNo.:</b> B-A19
<b>Source:</b> Mouse	<b>ENSEMBL Gene ID:</b> ENSG00000149294	<b>Excitation/Emission maxima wavelengths:</b> 654 nm / 674 nm
<b>Isotype:</b> IgG1	<b>Full Name:</b> neural cell adhesion molecule 1	

## Applications

**Tested Applications:**  
FC

**Species Specificity:**  
Human

## Background Information

Neural cell adhesion molecule 1 (NCAM1, also known as CD56) is a cell adhesion glycoprotein of the immunoglobulin (Ig) superfamily. It is a multifunction protein involved in synaptic plasticity, neurodevelopment, and neurogenesis. NCAM1 is expressed on human neurons, glial cells, skeletal muscle cells, NK cells and a subset of T cells, and the expression is observed in a wide variety of human tumors, including myeloma, myeloid leukemia, neuroendocrine tumors, Wilms' tumor, neuroblastoma, and NK/T cell lymphomas.

## Storage

**Storage:**  
Store at 2-8°C. Avoid exposure to light. Stable for one year after shipment.

**Storage Buffer:**  
PBS with 0.09% sodium azide and 0.5% BSA.

For technical support and original validation data for this product please contact:

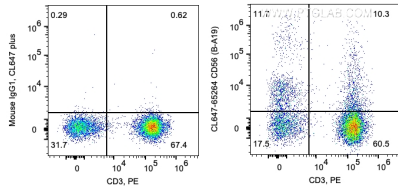
T: 4006900926

E: [Proteintech-CN@ptglab.com](mailto:Proteintech-CN@ptglab.com)

W: [ptgcn.com](http://ptgcn.com)

**This product is exclusively available under Proteintech Group brand and is not available to purchase from any other manufacturer.**

## Selected Validation Data



1X10<sup>6</sup> human PBMCs were surface co-stained with PE Anti-Human CD3 and 5 ul CoraLite® Plus 647 Anti-Human CD56 (CL647-65264, Clone:B-A19) or Mouse IgG1 Isotype Control. Cells were not fixed. Lymphocytes were gated.