

For Research Use Only

CoraLite® Plus 647 Anti-Human CD73 (AD2) Rabbit Recombinant Antibody



Catalog Number: **CL647-65500**

Basic Information

Catalog Number: CL647-65500	GenBank Accession Number: BC015940	Purification Method: Affinity purification
Size: 100tests, 5 µl/test	GeneID (NCBI): 4907	CloneNo.: AD2
Source: Rabbit	Full Name: 5'-nucleotidase, ecto (CD73)	Excitation/Emission maxima wavelengths: 654 nm / 674 nm
Isotype: IgG	Calculated MW: 29 kDa, 63 kDa	

Applications

Tested Applications:
FC
Species Specificity:
Human

Background Information

CD73, also known as ecto-5'-nucleotidase (5'-NT), is a 70-kDa, glycosyl-phosphatidylinositol-linked membrane-bound glycoprotein found in most tissues (PMID: 18404475; 20179192). CD73 is an ectoenzyme that catalyzes the dephosphorylation of AMP and other nucleoside monophosphates (PMID: 9553767). In the human immune system, CD73 is expressed on subsets of T and B cells, on germinal center follicular dendritic cells, and on thymic medullary reticular fibroblasts and epithelial cells (PMID: 2137649; 9553767). CD73 is highly expressed in many human solid tumors and is closely involved in cancer progression (PMID: 20179192).

Storage

Storage:
Store at 2-8°C. Avoid exposure to light. Stable for one year after shipment.
Storage Buffer:
PBS with 0.09% sodium azide and 0.5% BSA.

For technical support and original validation data for this product please contact:

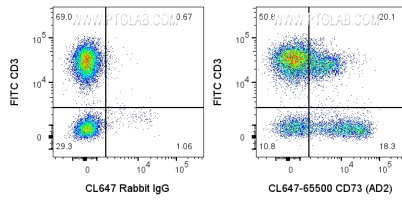
T: 4006900926

E: Proteintech-CN@ptglab.com

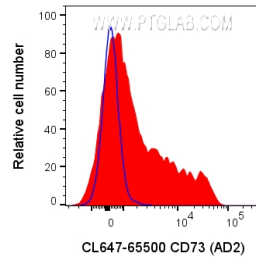
W: ptgcn.com

This product is exclusively available under Proteintech Group brand and is not available to purchase from any other manufacturer.

Selected Validation Data



1x10⁶ human PBMCs were surface stained with FITC Anti-Human CD3 and 5 ul CoraLite® Plus 647 Anti-Human CD73 Rabbit Recombinant Antibody (CL647-65500, Clone:AD2) or CoraLite® Plus 647-conjugated Rabbit IgG control PolyAb (CL647-30000). Cells were not fixed. Lymphocytes were gated.



1x10⁶ human PBMCs were surface stained with 5 ul CoraLite® Plus 647 Anti-Human CD73 Rabbit Recombinant Antibody (CL647-65500, Clone:AD2) or CoraLite® Plus 647-conjugated Rabbit IgG control PolyAb (CL647-30000). Cells were not fixed. Lymphocytes were gated.