

For Research Use Only

CoraLite® Plus 647 Anti-Human CD163 (GHI/61) Rabbit Recombinant Antibody



Catalog Number: **CL647-65501**

Basic Information

Catalog Number: CL647-65501	GenBank Accession Number: BC051281	Purification Method: Affinity purification
Size: 100tests, 5 µl/test	GeneID (NCBI): 9332	CloneNo.: GHI/61
Source: Rabbit	ENSEMBL Gene ID: ENSG00000177575	Excitation/Emission maxima wavelengths: 654 nm / 674 nm
Isotype: IgG	Full Name: CD163 molecule	
	Calculated MW: 1156 aa, 125 kDa	

Applications

Tested Applications:
FC

Species Specificity:
Human

Background Information

CD163, also known as M130, is a membrane glycoprotein that belongs to the scavenger receptor superfamily (PMID: 8370408). It is an acute phase-regulated and signal-inducing macrophage protein expressed exclusively in monocytes and tissue macrophages (PMID: 11196644). CD163 mediates endocytosis of haptoglobin-haemoglobin complexes (PMID: 11196644). The uptake of haptoglobin by macrophages contributes to the recycling of iron and also to the inflammatory response (PMID: 22900885). Soluble CD163 (sCD163), as a result of ectodomain shedding during inflammatory activation of macrophages, circulates in blood and has been suggested as a plasma/serum marker for macrophage activity (PMID: 12570164).

Storage

Storage:
Store at 2-8°C. Avoid exposure to light. Stable for one year after shipment.

Storage Buffer:
PBS with 0.09% sodium azide and 0.5% BSA.

For technical support and original validation data for this product please contact:

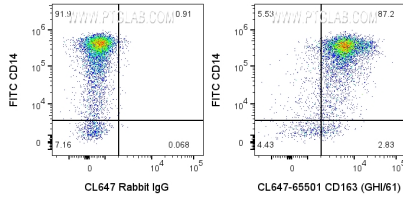
T: 4006900926

E: Proteintech-CN@ptglab.com

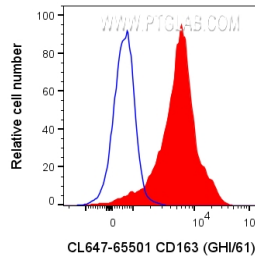
W: ptgcn.com

This product is exclusively available under Proteintech Group brand and is not available to purchase from any other manufacturer.

Selected Validation Data



1x10⁶ human PBMCs were surface stained with FITC Anti-Human CD14 and 5 ul CoraLite® Plus 647 Anti-Human CD163 Rabbit Recombinant Antibody (CL647-65501, Clone:GHI/61) or CoraLite® Plus 647-conjugated Rabbit IgG control PolyAb (CL647-30000). Cells were not fixed. Cells were treated with FC Receptor Block prior to staining. Monocytes were gated.



1x10⁶ human PBMCs were surface stained with 5 ul CoraLite® Plus 647 Anti-Human CD163 Rabbit Recombinant Antibody (CL647-65501, Clone:GHI/61) or CoraLite® Plus 647-conjugated Rabbit IgG control PolyAb (CL647-30000). Cells were not fixed. Cells were treated with FC Receptor Block prior to staining. Monocytes were gated.