

For Research Use Only

CoraLite® Plus 647 Anti-Human HLA-DR (L243) Rabbit Recombinant Antibody



Catalog Number: **CL647-65503**

Basic Information

Catalog Number: CL647-65503	GenBank Accession Number: BC032350	Purification Method: Affinity purification
Size: 100tests, 5 µl/test	GeneID (NCBI): 3122	CloneNo.: L243
Source: Rabbit	ENSEMBL Gene ID: ENSG00000204287	Excitation/Emission maxima wavelengths: 654 nm / 674 nm
Isotype: IgG	Full Name: major histocompatibility complex, class II, DR alpha	
	Calculated MW: 254 aa, 29 kDa	

Applications

Tested Applications:
FC

Species Specificity:
Human

Background Information

HLA-DR is a member of MHC class II molecules encoded by the human leukocyte antigen complex on the region 6p21.31 of chromosome 6. HLA-DR is composed of two non-covalently associated transmembrane glycoproteins (the α and β chains), and is primarily expressed on B lymphocytes, monocytes, dendritic cells and thymic epithelial cells (PMID: 33125816). HLA-DR participate in the antigen presentation to CD4+ or CD8+ T cells and is postulated as a general biomarker of sepsis-induced immunosuppression (PMID: 28199206, 32421903). The Anti-Human HLA-DR antibody, clone L243, is derived from Human Lymphoblastoid B-cell line RPMI 8866.

Storage

Storage:
Store at 2-8°C. Avoid exposure to light. Stable for one year after shipment.

Storage Buffer:
PBS with 0.09% sodium azide and 0.5% BSA.

For technical support and original validation data for this product please contact:

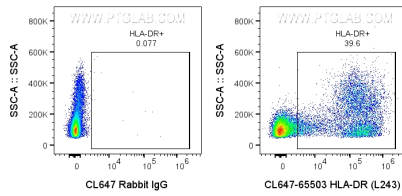
T: 4006900926

E: Proteintech-CN@ptglab.com

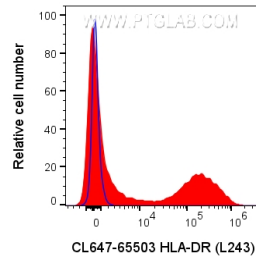
W: ptgcn.com

This product is exclusively available under Proteintech Group brand and is not available to purchase from any other manufacturer.

Selected Validation Data



1x10⁶ human PBMCs were surface stained with 5 ul CoraLite® Plus 647 Anti-Human HLA-DR Rabbit Recombinant Antibody (CL647-65503, Clone:L243) or CoraLite® Plus 647-conjugated Rabbit IgG control PolyAb (CL647-30000). Cells were not fixed. Lymphocytes and monocytes were gated.



1x10⁶ human PBMCs were surface stained with 5 ul CoraLite® Plus 647 Anti-Human HLA-DR Rabbit Recombinant Antibody (CL647-65503, Clone:L243) or CoraLite® Plus 647-conjugated Rabbit IgG control PolyAb (CL647-30000). Cells were not fixed. Lymphocytes and monocytes were gated.