

For Research Use Only

CoraLite® Plus 647 Anti-Human CD163 (GHI/61) Mouse IgG1 Recombinant Antibody



Catalog Number: **CL647-65522**

Basic Information

Catalog Number:

CL647-65522

Size:

100tests, 5 µl/test

Source:

Mouse

Isotype:

IgG1

GenBank Accession Number:

BC051281

GeneID (NCBI):

9332

ENSEMBL Gene ID:

ENSG00000177575

Full Name:

CD163 molecule

Calculated MW:

1156 aa, 125 kDa

Purification Method:

Affinity purification

CloneNo.:

GHI/61

Excitation/Emission maxima
wavelengths:

654 nm / 674 nm

Applications

Tested Applications:

FC

Species Specificity:

Human

Background Information

Storage

Storage:

Store at 2-8°C. Avoid exposure to light. Stable for one year after shipment.

Storage Buffer:

PBS with 0.09% sodium azide and 0.5% BSA.

For technical support and original validation data for this product please contact:

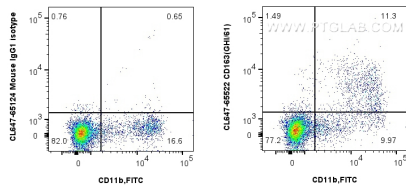
T: 4006900926

E: Proteintech-CN@ptglab.com

W: ptgcn.com

This product is exclusively available under Proteintech Group brand and is not available to purchase from any other manufacturer.

Selected Validation Data



1x10⁶ human PBMCs were surface stained with 5 ul CoraLite® Plus 647 Anti-Human CD163 Mouse Recombinant Antibody (CL647-65522, Clone: GHI/61) or CoraLite® Plus 647 Mouse IgG1 Isotype Control (MOPC-21) (CL647-65124, Clone: MOPC-21), and 5 ul FITC Plus Anti-Human CD11b (ICRF44) (FITC-65116, Clone: ICRF44). Cells were incubated with FC Receptor Block prior to staining. Cells were not fixed.