

For Research Use Only

# CoraLite® Plus 647 Anti-Rat CD11b (OX42) Mouse IgG1 Recombinant Antibody



Catalog Number: **CL647-65532**

## Basic Information

<b>Catalog Number:</b> CL647-65532	<b>GenBank Accession Number:</b> NM_012711	<b>Purification Method:</b> Affinity purification
<b>Size:</b> 100ug, 500 µg/ml	<b>GeneID (NCBI):</b> 25021	<b>CloneNo.:</b> OX42
<b>Source:</b> Mouse	<b>Full Name:</b> integrin alpha M	<b>Excitation/Emission maxima wavelengths:</b> 654 nm / 674 nm
<b>Isotype:</b> IgG1	<b>Calculated MW:</b> 127 kDa	

## Applications

**Tested Applications:**  
FC  
**Species Specificity:**  
Rat

## Background Information

Integrins are cell adhesion receptors that are heterodimers composed of non-covalently associated  $\alpha$  and  $\beta$  subunits (PMID: 9779984). CD11b, also known as Integrin alpha M or CR3A, belongs to the integrin alpha chain family. CD11b forms an  $\alpha / \beta$  heterodimer with CD18 (integrin  $\beta$  2). CD11b/CD18 is implicated in various adhesive interactions of monocytes, macrophages and granulocytes as well as in mediating the uptake of complement-coated particles and pathogens (PMID: 9558116; 20008295). CD11b/CD18 is a receptor for the complement protein fragment iC3b, and is also a receptor for fibrinogen, factor X and ICAM1 (PMID: 2971974; 15485828).

## Storage

**Storage:**  
Store at 2-8°C. Avoid exposure to light. Stable for one year after shipment.  
**Storage Buffer:**  
PBS with 0.09% sodium azide.

For technical support and original validation data for this product please contact:

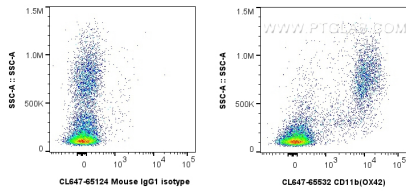
T: 4006900926

E: [Proteintech-CN@ptglab.com](mailto:Proteintech-CN@ptglab.com)

W: [ptgcn.com](http://ptgcn.com)

**This product is exclusively available under Proteintech Group brand and is not available to purchase from any other manufacturer.**

## Selected Validation Data



1x10<sup>6</sup> rat bone marrow cells were surface stained with 0.5 ug CoraLite® Plus 647 Anti-Rat CD11b (OX42) Mouse Recombinant Antibody (CL647-65532, Clone:OX42), or CoraLite® Plus 647 Mouse IgG1 Isotype Control (MOPC-21) (CL647-65124, Clone: MOPC-21). Cells were not fixed.