

For Research Use Only

# CoraLite® Plus 647 Anti-Human CD54 (15.2) Mouse IgG2a Recombinant Antibody



Catalog Number: **CL647-65567**

## Basic Information

<b>Catalog Number:</b> CL647-65567	<b>GenBank Accession Number:</b> BC015969	<b>Purification Method:</b> Protein A purification
<b>Size:</b> 100tests, 5 µl/test	<b>GeneID (NCBI):</b> 3383	<b>CloneNo.:</b> 15.2
<b>Source:</b> Mouse	<b>ENSEMBL Gene ID:</b> ENSG00000090339	<b>Excitation/Emission maxima wavelengths:</b> 654 nm / 674 nm
<b>Isotype:</b> IgG2a	<b>Full Name:</b> intercellular adhesion molecule 1	
	<b>Calculated MW:</b> 90 kDa	

## Applications

**Tested Applications:**  
FC

**Species Specificity:**  
Human

## Background Information

ICAM-1 (CD54) is a 90-kDa transmembrane glycoprotein of the immunoglobulin superfamily and is critical for the firm attachment and transmigration of leukocytes out of blood vessels and into tissues (PMID: 19307690). ICAM-1 is expressed by several cell types, typically on endothelial cells and cells of the immune system, and its expression can be up-regulated by various stimuli, including TNF- $\alpha$ , INF- $\gamma$ , IL-1 and thrombin (PMID: 3086451; 9694714; 15979056). It is a ligand for LFA-1 and Mac-1, serves as a receptor for rhinovirus, and is one of several receptors used by Plasmodium falciparum (PMID: 2566624; 2538244; 2475784).

## Storage

**Storage:**  
Store at 2-8°C. Avoid exposure to light. Stable for one year after shipment.

**Storage Buffer:**  
PBS with 0.09% sodium azide and 0.5% BSA.

For technical support and original validation data for this product please contact:

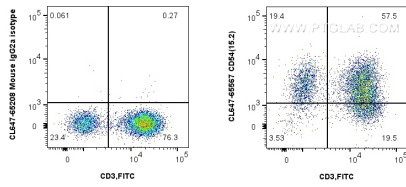
T: 4006900926

E: [Proteintech-CN@ptglab.com](mailto:Proteintech-CN@ptglab.com)

W: [ptgcn.com](http://ptgcn.com)

**This product is exclusively available under Proteintech Group brand and is not available to purchase from any other manufacturer.**

## Selected Validation Data



1x10<sup>6</sup> human PBMCs were surface stained with FITC Plus Anti-Human CD3, and 5 ul Coralite® Plus 647 Cd54 Recombinant Antibody (CL647-65567, Clone:15.2) or Coralite® Plus 647 Mouse IgG2a Isotype Control (C1.18.4) (CL647-65208, Clone: C1.18.4). Cells were not fixed. Lymphocytes were gated.