

For Research Use Only

CoraLite® Plus 647 Anti-Human CD26 (BA5b) Mouse IgG2a Recombinant Antibody



Catalog Number: **CL647-65574**

Basic Information

| | | |
|--------------------------------|---------------------------------------|---|
| Catalog Number: CL647-65574 | GenBank Accession Number: BC013329 | Purification Method: Protein A purification |
| Size: 100tests, 5 µl/test | GeneID (NCBI): 1803 | CloneNo.: BA5b |
| Source: Mouse | Full Name: dipeptidyl-peptidase 4 | Excitation/Emission maxima wavelengths: 654 nm / 674 nm |
| Isotype: IgG2a | Calculated MW: 88 kDa | |

Applications

Tested Applications:
FC
Species Specificity:
Human

Background Information

CD26, also known as DPP4 (dipeptidyl peptidase-4), is a 110 kDa type II cell-surface glycoprotein widely expressed on T cells, activated B cells, activated NK cells and myeloid cells as well as on epithelial cells, fibroblasts, mesothelium, and endothelial cells of a variety of tissues (PMID:33777580; 26919392). It has ecto-enzyme activity in its extracellular domain and cleaves amino-terminal dipeptides with either L-proline or L-alanine at the penultimate position (PMID: 9553764). CD26 plays roles in diverse biological processes such as immunoregulation, glucose homeostasis, and tumorigenesis (PMID: 33777580).

Storage

Storage:
Store at 2-8°C. Avoid exposure to light. Stable for one year after shipment.
Storage Buffer:
PBS with 0.09% sodium azide and 0.5% BSA.

For technical support and original validation data for this product please contact:

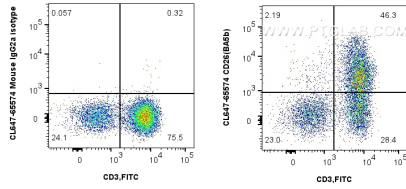
T: 4006900926

E: Proteintech-CN@ptglab.com

W: ptgcn.com

This product is exclusively available under Proteintech Group brand and is not available to purchase from any other manufacturer.

Selected Validation Data



1x10⁶ human PBMCs were surface stained with 5 ul Coralite® Plus 647 CD26 Recombinant Antibody (CL647-65574, Clone: BA5b) or Coralite® Plus 647 Mouse IgG2a Isotype Control (C1.18.4) (CL647-65208, Clone: C1.18.4). Cells were then stained with 5 ul FITC Plus Anti-Human CD3 (OKT3) (FITC-65133, Clone: OKT3). Cells were not fixed. Lymphocytes were gated.