

For Research Use Only

# CoraLite® Plus 647 Anti-Human CD21 (BU32) Mouse IgG2a Recombinant Antibody

Catalog Number: CL647-65591



## Basic Information

**Catalog Number:**

CL647-65591

**Size:**

100tests, 5 ul/test

**Source:**

Mouse

**Isotype:**

IgG2a

**GenBank Accession Number:**

BC136394

**GeneID (NCBI):**

1380

**ENSEMBL Gene ID:**

ENSG00000117322

**Full Name:**

complement component (3d/Epstein Barr virus) receptor 2

**Calculated MW:**

1092 aa, 119 kDa

**Purification Method:**

Protein A purification

**CloneNo.:**

BU32

**Excitation/Emission maxima wavelengths:**

654 nm / 674 nm

## Applications

**Tested Applications:**

FC

**Species Specificity:**

human

## Background Information

CD21, also known as complement receptor type 2 (CR2), complement C3d receptor, and Epstein-Barr virus receptor, is a transmembrane protein that contains a small cytoplasmic domain, a transmembrane region and an extracellular domain consisting of 15 tandem short consensus repeat sequences (PMID: 6230668; 2551147). It is expressed on B cells, follicular dendritic cells, thymocytes and a subset of peripheral T cells (PMID: 26119182). CD21 binds complement fragments C3d, C3dg and iC3b and acts as a receptor for the Epstein-Barr virus (PMID: 7753047). On B cells, together with CD19 and CD81, CD21 forms a complex that functions as a co-receptor to the BCR (PMID: 7542009). It is involved in B cells activation and functions.

## Storage

**Storage:**

Store at 2-8°C. Avoid exposure to light. Stable for one year after shipment.

**Storage Buffer:**

PBS with 0.09% sodium azide and 0.5% BSA.

For technical support and original validation data for this product please contact:

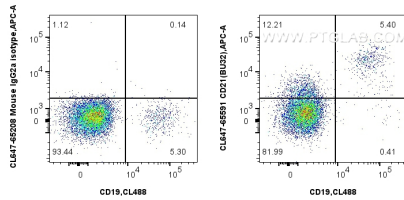
T: 4006900926

E: [Proteintech-CN@ptglab.com](mailto:Proteintech-CN@ptglab.com)

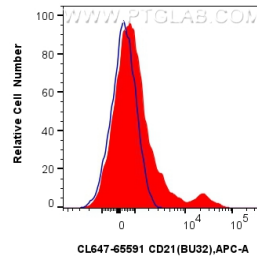
W: [ptgcn.com](http://ptgcn.com)

**This product is exclusively available under Proteintech Group brand and is not available to purchase from any other manufacturer.**

## Selected Validation Data



1x10<sup>6</sup> human PBMCs were surface stained with CoraLite® Plus 488 Anti-Human CD19 and 5 ul CoraLite® Plus 647 Anti-Human CD21 (BU32) Mouse IgG2a Recombinant Antibody (CL647-65591, Clone:BU32), or CoraLite® Plus 647 Mouse IgG2a Isotype Control (C1.18.4) (CL647-65208, Clone: C1.18.4). Cells were not fixed. Lymphocytes were gated.



1x10<sup>6</sup> human PBMCs were surface stained with 5 ul CoraLite® Plus 647 Anti-Human CD21 (BU32) Mouse IgG2a Recombinant Antibody (CL647-65591, Clone:BU32)(red), or CoraLite® Plus 647 Mouse IgG2a Isotype Control (C1.18.4) (CL647-65208, Clone: C1.18.4)(blue). Cells were not fixed. Lymphocytes were gated.