

For Research Use Only

CoraLite® Plus 647 Anti-Human CD107a / LAMP1 (H4A3) Mouse IgG2a Recombinant Antibody

Catalog Number: CL647-65596



Basic Information

Catalog Number:

CL647-65596

Concentration:

100 tests, 5 µl/test

Source:

Mouse

Isotype:

IgG2a

GenBank Accession Number:

BC006345

GeneID (NCBI):

3916

ENSEMBL Gene ID:

ENSG00000185896

Full Name:

lysosomal-associated membrane protein 1

Calculated MW:

45 kDa

Purification Method:

Protein A purification

CloneNo.:

H4A3

Excitation/Emission maxima wavelengths:

654 nm / 674 nm

Applications

Tested Applications:

FC (Intra)

Species Specificity:

human

Background Information

LAMP1 (CD107a) is a heavily glycosylated membrane protein enriched in the lysosomal membrane. LAMP1 is extensively glycosylated with asparagine-linked oligosaccharides which protect it from intracellular proteolysis (PMID: 10521503). Although LAMP1 is expressed largely in the endosome-lysosomal membrane of cells, it is also found on the plasma membrane (PMID: 16168398). Elevated LAMP1 expression at the cell surface has also been detected during platelet and granulocytic cell activation, as well as in some tumor cells (PMID: 29085473). LAMP1 functions to provide selectins with carbohydrate ligands. This protein has also been shown to be a marker of degranulation on lymphocytes such as CD8+ and NK cells and may also play a role in tumor cell differentiation and metastasis (PMID: 18835598; 29085473; 9426697).

Storage

Storage:

Store at 2-8°C. Avoid exposure to light. Stable for one year after shipment.

Storage Buffer:

PBS with 0.09% sodium azide.

For technical support and original validation data for this product please contact:

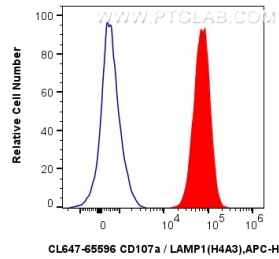
T: 4006900926

E: Proteintech-CN@ptglab.com

W: ptgcn.com

This product is exclusively available under Proteintech Group brand and is not available to purchase from any other manufacturer.

Selected Validation Data



1x10⁶ Jurkat cells were intracellularly stained with 5ul CoraLite® Plus 647 Anti-Human CD107a / LAMP1 (H4A3) Mouse IgG2a RecAb (CL647-65596, Clone: H4A3) (red) or CoraLite® Plus 647 Mouse IgG2a Isotype Control (C1.18.4) (CL647-65208, Clone: C1.18.4) (blue). Cells were fixed with 4% PFA and permeabilized with Flow Cytometry Perm Buffer (PF00011-C).