

For Research Use Only

CoraLite® Plus 647 Anti-Human CD11c (BU15) Mouse IgG2a Recombinant Antibody



Catalog Number: **CL647-65600**

Basic Information

Catalog Number: CL647-65600	GenBank Accession Number: BC038237	Purification Method: Protein A purification
Size: 100tests, 5 µl/test	GeneID (NCBI): 3687	CloneNo.: BU15
Source: Mouse	ENSEMBL Gene ID: ENSG00000140678	Excitation/Emission maxima wavelengths: 654 nm / 674 nm
Isotype: IgG2a	Full Name: integrin, alpha X (complement component 3 receptor 4 subunit)	
	Calculated MW: 1169 aa, 129 kDa	

Applications

Tested Applications:
FC
Species Specificity:
human

Background Information

Integrins are cell adhesion receptors that are heterodimers composed of non-covalently associated α and β subunits (PMID: 9779984). CD11c, also known as integrin αX , is a type I transmembrane glycoprotein present on a variety of cells, including monocytes/macrophages, granulocytes, a subset of B cells, NK cells and dendritic cells (PMID: 2897326; 1680915; 1694698; 17389580). As a result of its high level of expression on most dendritic cells, CD11c is typically considered to be a marker of conventional dendritic cells (PMID: 27119555). CD11c forms an α / β heterodimer with CD18 (integrin $\beta 2$). CD11c/CD18 acts as a receptor for fibrinogen and is important in monocyte adhesion and chemotaxis (PMID: 1671533).

Storage

Storage:
Store at 2-8°C. Avoid exposure to light.
Storage Buffer:
PBS with 0.09% sodium azide and 0.5% BSA.

For technical support and original validation data for this product please contact:

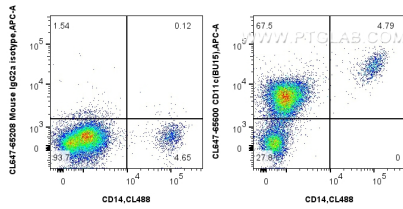
T: 4006900926

E: Proteintech-CN@ptglab.com

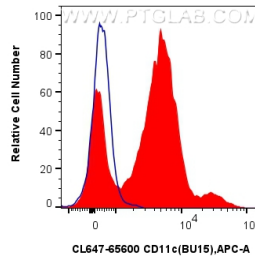
W: ptgcn.com

This product is exclusively available under Proteintech Group brand and is not available to purchase from any other manufacturer.

Selected Validation Data



1x10⁶ human peripheral blood leukocytes were surface stained with CoraLite® Plus 488 Anti-Human CD14 and 5 ul CoraLite® Plus 647 Anti-Human CD11c Mouse IgG2a Recombinant Antibody (CL647-65600, Clone: BU15), or CoraLite® Plus 647 Mouse IgG2a Isotype Control (CL647-65208, Clone: C.1.18.4). Cells were incubated with FC Receptor Block prior to staining. Cells were not fixed.



1x10⁶ human peripheral blood leukocytes were surface stained with 5 ul CoraLite® Plus 647 Anti-Human CD11c Mouse IgG2a Recombinant Antibody (CL647-65600, Clone: BU15) (red), or CoraLite® Plus 647 Mouse IgG2a Isotype Control (CL647-65208, Clone: C.1.18.4) (blue). Cells were incubated with FC Receptor Block prior to staining. Cells were not fixed.