

For Research Use Only



CoraLite® Plus 647 Anti-Human ALCAM (3A6) Mouse IgG2a Recombinant Antibody

Catalog Number: **CL647-65611**

Basic Information

Catalog Number: CL647-65611	GenBank Accession Number: BC057809	Purification Method: Protein A purification
Size: 100tests, 5 µl/test	GeneID (NCBI): 214	CloneNo.: 3A6
Source: Mouse	Full Name: activated leukocyte cell adhesion molecule	Excitation/Emission maxima wavelengths: 654 nm / 674 nm
Isotype: IgG2a	Calculated MW: 105 kDa	

Applications

Tested Applications:
FC

Species Specificity:
human

Background Information

Activated leukocyte cell adhesion molecule (ALCAM, also known as CD166) is a cell adhesion molecule that belongs to the immunoglobulin superfamily. It is involved in cell-cell adhesion through homophilic and heterophilic (to CD6) interactions. ALCAM is widely expressed in a variety of normal tissues and cell types, including activated T cells and monocytes, epithelial cells, fibroblasts, neuronal cells, hepatocytes, and bone marrow mesenchymal stem cells (PMID: 7760007; 25221999). Altered ALCAM expression has been associated with the differentiation state and progression in some neoplasms including melanoma, prostate, colorectal, and breast cancers (PMID: 20461761; 18172759).

Storage

Storage:
Store at 2-8°C. Avoid exposure to light.
Storage Buffer:
PBS with 0.09% sodium azide and 0.5% BSA.

For technical support and original validation data for this product please contact:

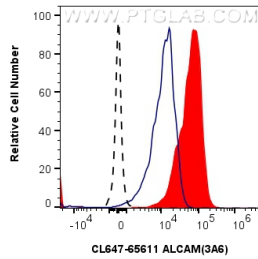
T: 4006900926

E: Proteintech-CN@ptglab.com

W: ptgcn.com

This product is exclusively available under Proteintech Group brand and is not available to purchase from any other manufacturer.

Selected Validation Data



1×10^6 PHA treated (red) or untreated (black) human PBMCs were surface stained with 5 μ l CoraLite® Plus 647 Anti-Human ALCAM (3A6) Mouse IgG2a Recombinant Antibody (CL647-65611, Clone:3A6), or CoraLite® Plus 647 Mouse IgG2a Isotype Control (C1.18.4) (CL647-65208, Clone: C1.18.4) (blue). Cells were not fixed.