

For Research Use Only

CoraLite® Plus 647 Anti-Human CD16 (3G8) Mouse IgG2a Recombinant Antibody



Catalog Number: **CL647-65612**

Basic Information

Catalog Number: CL647-65612	GenBank Accession Number: BC017865	Purification Method: Protein A purification
Size: 100tests, 5 µl/test	GeneID (NCBI): 2214	CloneNo.: 3G8
Source: Mouse	ENSEMBL Gene ID: ENSG00000203747	Excitation/Emission maxima wavelengths: 654 nm / 674 nm
Isotype: IgG2a	Full Name: Fc fragment of IgG, low affinity IIIa, receptor (CD16a)	
	Calculated MW: 254 aa, 29 kDa	

Applications

Tested Applications:
FC

Species Specificity:
human

Background Information

CD16 is a 50-70-kDa low affinity Fc receptor found on the surface of natural killer cells, neutrophil polymorphonuclear leukocytes, monocytes and macrophages. CD16 mediates antibody-dependent cellular cytotoxicity (ADCC) and other antibody-dependent responses, such as phagocytosis. CD16 has been identified as Fc receptors Fc γ RIIIa (CD16a) and Fc γ RIIIb (CD16b), encoded by two nearly identical genes, FCGR3A and the FCGR3B. Clone 3G8 recognizes both the CD16a and CD16b (PMID: 7592758).

Storage

Storage:
Store at 2-8°C. Avoid exposure to light.
Storage Buffer:
PBS with 0.09% sodium azide and 0.5% BSA.

For technical support and original validation data for this product please contact:

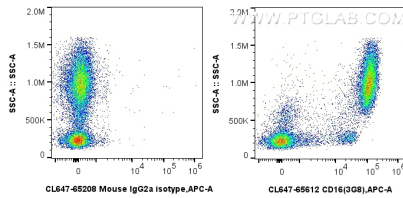
T: 4006900926

E: Proteintech-CN@ptglab.com

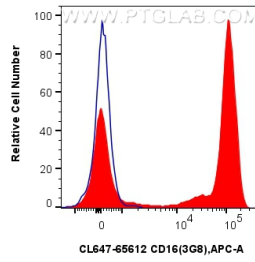
W: ptgcn.com

This product is exclusively available under Proteintech Group brand and is not available to purchase from any other manufacturer.

Selected Validation Data



1x10⁶ human peripheral blood leukocytes were surface stained with 5 ul CoraLite® Plus 647 Anti-Human CD16 Mouse IgG2a Recombinant Antibody (CL647-65612, Clone: 3G8), or CoraLite® Plus 647 Mouse IgG2a Isotype Control (CL647-65208, Clone: C1.18.4). Cells were incubated with FC Receptor Block prior to staining. Cells were not fixed.



1x10⁶ human peripheral blood leukocytes were surface stained with 5 ul CoraLite® Plus 647 Anti-Human CD16 Mouse IgG2a Recombinant Antibody (CL647-65612, Clone: 3G8) (red), or CoraLite® Plus 647 Mouse IgG2a Isotype Control (CL647-65208, Clone: C1.18.4) (blue). Cells were incubated with FC Receptor Block prior to staining. Cells were not fixed.