

For Research Use Only

CoraLite® Plus 647 Anti-Human CD28 (CD28.2) Mouse IgG2a Recombinant Antibody

Catalog Number: CL647-65621



Basic Information

Catalog Number:

CL647-65621

Size:

100tests, 5 ul/test

Source:

Mouse

Isotype:

IgG2a

GenBank Accession Number:

BC093698

GeneID (NCBI):

940

ENSEMBL Gene ID:

ENSG00000178562

Full Name:

CD28 molecule

Calculated MW:

220 aa, 25 kDa

Purification Method:

Protein A purification

CloneNo.:

CD28.2

Excitation/Emission maxima wavelengths:

654 nm / 674 nm

Applications

Tested Applications:

FC

Species Specificity:

human

Background Information

CD28 (T-cell-specific surface glycoprotein CD28), also known as T44 and Tp44, is a 44 kD disulfide-linked homodimeric type I glycoprotein (PMID: 2162180). It is a member of the immunoglobulin superfamily and is expressed on most T lineage cells, NK cell subsets, and plasma cells (PMID: 2162180, 8386518). CD28 may affect in vivo immune responses by functioning both as a cell adhesion molecule linking B and T lymphocytes and as the surface component of a novel signal transduction pathway (PMID: 2162180, 3021470). CD28 binds both CD80 and CD86 with a highly conserved motif MYPPY in the CDR3-like loop (PMID: 15696168, 7964482). CD28 is considered a major co-stimulatory molecule, inducing T lymphocyte activation and IL-2 synthesis, and preventing cell death (PMID: 1348520).

Storage

Storage:

Store at 2-8°C. Avoid exposure to light. Stable for one year after shipment.

Storage Buffer:

PBS with 0.09% sodium azide.

For technical support and original validation data for this product please contact:

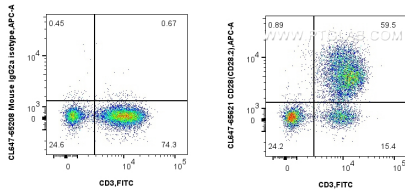
T: 4006900926

E: Proteintech-CN@ptglab.com

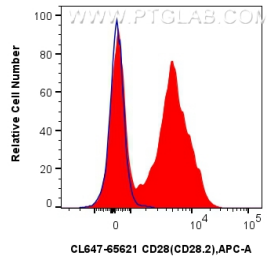
W: ptgcn.com

This product is exclusively available under Proteintech Group brand and is not available to purchase from any other manufacturer.

Selected Validation Data



1x10⁶ human PBMCs were surface stained with FITC Plus Anti-Human CD3 (OKT3) (FITC-65133, Clone: OKT3), and 5 ul CoraLite® Plus 647 Anti-Human CD28 (CD28.2) Mouse IgG2a Recombinant Antibody (CL647-65621, Clone: CD28.2) or CoraLite® Plus 647 Mouse IgG2a Isotype Control (C1.18.4) (CL647-65208, Clone: C1.18.4). Cells were not fixed. Lymphocytes were gated.



1x10⁶ human PBMCs were surface stained with 5 ul CoraLite® Plus 647 Anti-Human CD28 (CD28.2) Mouse IgG2a Recombinant Antibody (CL647-65621, Clone: CD28.2) (red) or CoraLite® Plus 647 Mouse IgG2a Isotype Control (C1.18.4) (CL647-65208, Clone: C1.18.4) (blue). Cells were not fixed. Lymphocytes were gated.