

For Research Use Only

CoraLite® Plus 647-conjugated 6*His, His-Tag Monoclonal antibody



Catalog Number:CL647-66005

1 Publications

Basic Information

Catalog Number:

CL647-66005

Size:

1000 µg/ml

Source:

Mouse

Isotype:

IgG1

GenBank Accession Number:

GeneID (NCBI):

Full Name:

Calculated MW:

1 kDa

Purification Method:

Protein G purification

CloneNo.:

1B7G5

Recommended Dilutions:

IF 1:250-1:1000

Excitation/Emission maxima
wavelengths:

654 nm / 674 nm

Applications

Tested Applications:

FC (Intra), IF/ICC

Cited Applications:

IF

Species Specificity:

recombinant protein

Positive Controls:

IF : Transfected HEK-293 cells,

Background Information

Protein tags are protein or peptide sequences located either on the C- or N- terminal of the target protein, which facilitates one or several of the following characteristics: solubility, detection, purification, localization and expression. His-tag is often used for affinity purification and binding assays. Expressed His-tagged proteins can be purified and detected easily because the string of histidine residues binds to several types of immobilized metal ions, including nickel, cobalt and copper, under specific buffer conditions. The His-tag antibody is a useful tool for monitoring of the His-tagged proteins, and recognizes His-tags placed at N-terminal, C-terminal, and internal regions of fusion proteins expressed in bacteria, insect, and mammalian cells.

Notable Publications

Author	Pubmed ID	Journal	Application
Fa Dai	37216400	PLoS Pathog	IF

Storage

Storage:

Store at -20°C. Avoid exposure to light. Stable for one year after shipment.

Storage Buffer:

PBS with 50% Glycerol, 0.05% Proclin300, 0.5% BSA, pH 7.3.

Aliquoting is unnecessary for -20°C storage

For technical support and original validation data for this product please contact:

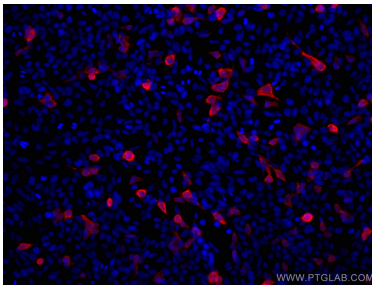
T: 4006900926

E: Proteintech-CN@ptglab.com

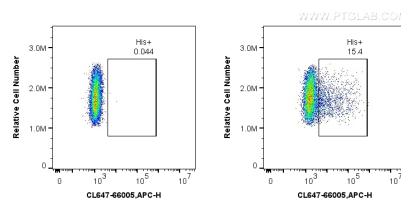
W: ptgcn.com

This product is exclusively available under Proteintech Group brand and is not available to purchase from any other manufacturer.

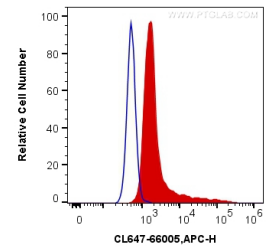
Selected Validation Data



Immunofluorescent analysis of (-20°C Ethanol) fixed Transfected HEK-293 cells using CoraLite® Plus 647-conjugated 6*His, His-Tag antibody (CL647-66005, Clone: 1B7G5) at dilution of 1:500.



1X10⁶ Transfected HEK-293 cells were intracellularly stained with 0.4 ug CoraLite® Plus 647 Anti-N/A 6*His, His-Tag (CL647-66005, Clone:1B7G5) (red), or 0.4 ug Control Antibody. Cells were fixed with 4% PFA and permeabilized with Flow Cytometry Perm Buffer (PF00011-C).



1X10⁶ Transfected HEK-293 cells were intracellularly stained with 0.4 ug CoraLite® Plus 647 Anti-N/A 6*His, His-Tag (CL647-66005, Clone:1B7G5) (red), or 0.4 ug Control Antibody. Cells were fixed with 4% PFA and permeabilized with Flow Cytometry Perm Buffer (PF00011-C).