

For Research Use Only

CoraLite® Plus 647-conjugated Alpha Tubulin Monoclonal antibody

Catalog Number: CL647-66031

Featured Product

1 Publications



Basic Information

Catalog Number:

CL647-66031

Size:

1000 µg/ml

Source:

Mouse

Isotype:

IgG2b

Immunogen Catalog Number:

AG18034

GenBank Accession Number:

BC009314

GeneID (NCBI):

10376

UNIPROT ID:

P68363

Full Name:

tubulin, alpha 1b

Calculated MW:

50 kDa

Observed MW:

50-55 kDa

Purification Method:

Protein A purification

CloneNo.:

1E4C11

Recommended Dilutions:

IF/ICC 1:50-1:500

Excitation/Emission maxima wavelengths:

654 nm / 674 nm

Applications

Tested Applications:

IF/ICC, FC (Intra)

Cited Applications:

IF

Species Specificity:

human, mouse, rat, canine

Cited Species:

mouse

Positive Controls:

IF/ICC : HeLa cells,

Background Information

There are five tubulins in human cells: alpha, beta, gamma, delta, and epsilon. Tubulins are conserved across species. They form heterodimers, which multimerize to form a microtubule filament. An alpha and beta tubulin heterodimer is the basic structural unit of microtubules. The heterodimer does not come apart once formed. The alpha and beta tubulins, which are each about 55 kDa MW, are homologous but not identical. Alpha tubulin is useful for scientists across fields as an internal control due to its high, ubiquitous expression pattern. Tubulin expression may vary according to resistance to antimicrobial and antimitotic drugs. This antibody specifically recognizes Tubulin Alpha.

Notable Publications

Author	Pubmed ID	Journal	Application
Lu Mu	39747922	Nat Commun	IF

Storage

Storage:

Store at -20°C. Avoid exposure to light. Stable for one year after shipment.

Storage Buffer:

PBS with 50% Glycerol, 0.05% Proclin300, 0.5% BSA, pH 7.3.

Aliquoting is unnecessary for -20°C storage

For technical support and original validation data for this product please contact:

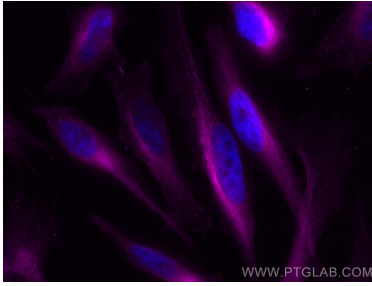
T: 4006900926

E: Proteintech-CN@ptglab.com

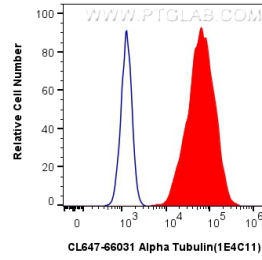
W: ptgcn.com

This product is exclusively available under Proteintech Group brand and is not available to purchase from any other manufacturer.

Selected Validation Data



Immunofluorescent analysis of (4% PFA) fixed HeLa cells using CoraLite® Plus 647 Alpha Tubulin antibody (CL647-66031, Clone: 1E4C11) at dilution of 1:200.



1X10⁶ HeLa cells were intracellularly stained with 0.8 ug CoraLite® Plus 647 Anti-Human Alpha Tubulin (CL647-66031, Clone:1E4C11) (red), or 0.8 ug CoraLite® Plus 647 Mouse IgG2b Isotype Control (MPC-11) (CL647-65128, Clone: MPC-11) (blue). Cells were fixed with 4% PFA and permeabilized with Flow Cytometry Perm Buffer (PF00011-C).