

For Research Use Only

CoraLite® Plus 647-conjugated Mouse IgG1 isotype control Monoclonal antibody



Catalog Number: **CL647-66360**

Basic Information

Catalog Number:

CL647-66360

Size:

2000 µg/ml

Source:

Mouse

Isotype:

IgG1

GenBank Accession Number:

GeneID (NCBI):

Full Name:

Purification Method:

Protein G purification

CloneNo.:

1F8D3

Excitation/Emission maxima
wavelengths:

654 nm / 674 nm

Applications

Tested Applications:

FC

Species Specificity:

Megathura crenulata

Background Information

This antibody is used as the isotype control of mouse IgG1 (Kappa). It can be used as the isotype control in Flow Cytometry and other experiments. The immunogen of this antibody is Keyhole Limpet Hemocyanin (KLH).

0.05-0.2 µg per test is suggested for FC experiment.

Storage

Storage:

Store at -20°C. Avoid exposure to light. Stable for one year after shipment.

Storage Buffer:

PBS with 50% Glycerol, 0.05% Proclin300, 0.5% BSA, pH 7.3.

Aliquoting is unnecessary for -20°C storage

For technical support and original validation data for this product please contact:

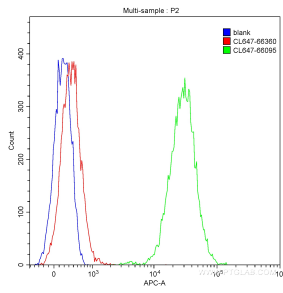
T: 4006900926

E: Proteintech-CN@ptglab.com

W: ptgcn.com

This product is exclusively available under Proteintech Group brand and is not available to purchase from any other manufacturer.

Selected Validation Data



1X10⁶ HepG2 cells were stained with 0.20 ug CoraLite® Plus 647-conjugated mouse IgG1 isotype control (CL647-66360, Clone:1F8D3) (red) or 0.20 ug CoraLite® Plus 647-conjugated Lamin B1 antibody (CL647-66095) (green), or not stained (blank) (blue). Cells were fixed with 90% MeOH.