

For Research Use Only

CoraLite® Plus 647-conjugated IgG4 Monoclonal antibody



Catalog Number: CL647-66408

Basic Information

Catalog Number:

CL647-66408

Size:

1000 µg/ml

Source:

Mouse

Isotype:

IgG1

GenBank Accession Number:

AL928742

GeneID (NCBI):

3503

Full Name:

immunoglobulin heavy constant
gamma 4 (G4m marker)

Calculated MW:

55 kDa

Observed MW:

55 kDa

Purification Method:

Protein G purification

CloneNo.:

1A1A2

Recommended Dilutions:

IF-P 1:50-1:500

Excitation/Emission maxima
wavelengths:

654 nm / 674 nm

Applications

Tested Applications:

IF-P

Species Specificity:

human

Positive Controls:

IF-P: human tonsillitis tissue,

Background Information

This antibody detects the heavy chain of human IgG4. The immunogen of this antibody is the specific domain "NKGLPSSIEK" of IGHG4.

Storage

Storage:

Store at -20°C. Avoid exposure to light.

Storage Buffer:

PBS with 50% Glycerol, 0.05% Proclin300, 0.5% BSA, pH 7.3.

Aliquoting is unnecessary for -20°C storage

For technical support and original validation data for this product please contact:

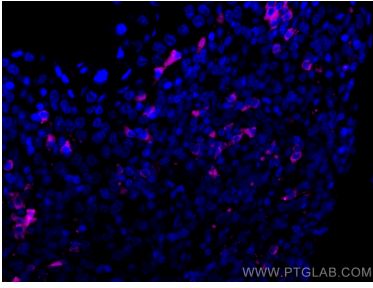
T: 4006900926

E: Proteintech-CN@ptglab.com

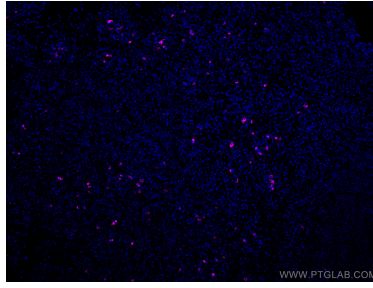
W: ptgcn.com

This product is exclusively available under Proteintech Group brand and is not available to purchase from any other manufacturer.

Selected Validation Data



Immunofluorescent analysis of (4% PFA) fixed human tonsillitis tissue using CoraLite® Plus 647 Human IgG4 antibody (CL647-66408, Clone: 1A1A2) at dilution of 1:200.



Immunofluorescent analysis of (4% PFA) fixed human tonsillitis tissue using CoraLite® Plus 647 Human IgG4 antibody (CL647-66408, Clone: 1A1A2) at dilution of 1:100.