

For Research Use Only

CoraLite® Plus 647-conjugated TDP-43 (C-terminal) Monoclonal antibody

Catalog Number: CL647-67345

Featured Product



Basic Information

Catalog Number:

CL647-67345

Size:

1000 µg/ml

Source:

Mouse

Isotype:

IgG2a

GenBank Accession Number:

NM_007375

GeneID (NCBI):

23435

UNIPROT ID:

Q13148

Full Name:

TAR DNA binding protein

Calculated MW:

43 kDa

Observed MW:

43-45 kDa

Purification Method:

Protein A purification

CloneNo.:

1G5F6

Recommended Dilutions:

IF/ICC 1:50-1:500

Excitation/Emission maxima wavelengths:

654 nm / 674 nm

Applications

Tested Applications:

IF/ICC

Species Specificity:

human, mouse, rat

Positive Controls:

IF/ICC : HeLa cells,

Background Information

Transactivation response (TAR), DNA-binding protein of 43 kDa (also known as TARDBP or TDP-43), was first isolated as a transcriptional inactivator binding to the TAR DNA element of the HIV-1 virus. Neumann et al. (2006) found that a hyperphosphorylated, ubiquitinated, and cleaved form of TARDBP, known as pathologic TDP-43, is the major component of the tau-negative and ubiquitin-positive inclusions that characterize amyotrophic lateral sclerosis (ALS) and the most common pathological subtype of frontotemporal lobar degeneration (FTLD-U). 67345-1-Ig is a mouse monoclonal antibody raised against the C-terminal region of human TDP-43.

Storage

Storage:

Store at -20°C. Avoid exposure to light. Stable for one year after shipment.

Storage Buffer:

PBS with 50% Glycerol, 0.05% Proclin300, 0.5% BSA, pH 7.3.

Aliquoting is unnecessary for -20°C storage

For technical support and original validation data for this product please contact:

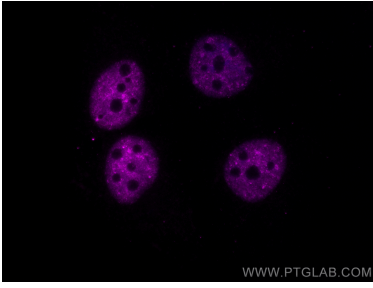
T: 4006900926

E: Proteintech-CN@ptglab.com

W: ptgcn.com

This product is exclusively available under Proteintech Group brand and is not available to purchase from any other manufacturer.

Selected Validation Data



Immunofluorescent analysis of (4% PFA) fixed HeLa cells using CoraLite® Plus 647 TDP-43 (C-terminal) antibody (CL647-67345, Clone: 1G5F6) at dilution of 1:200.