

For Research Use Only

CoraLite® Plus 647-conjugated NCAPH Monoclonal antibody



Catalog Number: CL647-67655

Basic Information

Catalog Number: CL647-67655	GenBank Accession Number: BC024211	Purification Method: Protein G purification
Size: 1000 µg/ml	GeneID (NCBI): 23397	CloneNo.: 3D2F11
Source: Mouse	UNIPROT ID: Q15003	Recommended Dilutions: IF-P 1:50-1:500
Isotype: IgG1	Full Name: non-SMC condensin I complex, subunit H	Excitation/Emission maxima wavelengths: 654 nm / 674 nm
Immunogen Catalog Number: AG27748	Calculated MW: 741 aa, 83 kDa	

Applications

Tested Applications: IF-P	Positive Controls: IF-P : human liver cancer tissue,
Species Specificity: Human	

Background Information

Non-SMC condensin I complex subunit H (NCAPH) is one of the three non-SMC subunits in condensin I, which belongs to a recently defined superfamily of proteins termed kleisins. Another two non-SMC subunits, CAP-D2 and CAP-G, share a highly degenerate repeating motif known as HEAT repeat. Some studies show that each subunit is essential for viability and plays an important role in mitotic chromosome architecture and segregation. In recent years, researchers found that the high expression of NCAPH was associated with poor prognosis in patients with non-small cell lung cancer and prostate cancer. Downregulation of NCAPH inhibited the proliferation, migration, and invasion of several cancer cells significantly. Moreover, NCAPH was involved in the regulation of mature chromosome condensation and DNA damage. These data suggest that NCAPH may be a key carcinogen involved in the development and progression of human malignant tumors. (PMID: 28300828, PMID: 33311486)

Storage

Storage:
Store at -20°C. Avoid exposure to light.
Storage Buffer:
PBS with 50% Glycerol, 0.05% Proclin300, 0.5% BSA, pH 7.3.
Aliquoting is unnecessary for -20°C storage

For technical support and original validation data for this product please contact:

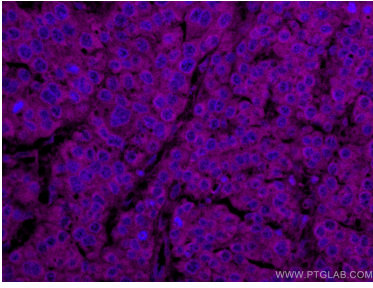
T: 4006900926

E: Proteintech-CN@ptglab.com

W: ptgcn.com

This product is exclusively available under Proteintech Group brand and is not available to purchase from any other manufacturer.

Selected Validation Data



Immunofluorescent analysis of (4% PFA) fixed human liver cancer tissue using CoraLite® Plus 647 NCAPH antibody (CL647-67655, Clone: 3D2F11) at dilution of 1:200.