

For Research Use Only

CoraLite® Plus 647-conjugated SERBP1 Monoclonal antibody



Catalog Number:CL647-67792

Basic Information

Catalog Number: CL647-67792	GenBank Accession Number: BC008045	Purification Method: Protein G purification
Size: 1000 µg/ml	GeneID (NCBI): 26135	CloneNo.: 1D4H1
Source: Mouse	UNIPROT ID: Q8NC51	Recommended Dilutions: IF-P 1:50-1:500
Isotype: IgG1	Full Name: SERPINE1 mRNA binding protein 1	Excitation/Emission maxima wavelengths: 654 nm / 674 nm
Immunogen Catalog Number: AG30202	Calculated MW: 45 kDa	
	Observed MW: 50 kDa	

Applications

Tested Applications: IF-P	Positive Controls: IF-P: human liver cancer tissue,
Species Specificity: Human, Mouse, Rat	

Background Information

The plasminogen activator system (PA) plays an important role in invasion and metastasis of solid tumors. The PA Inhibitor type 1 (PAI-1) is the main physiologic regulator of plasminogen activation. PAI-RBP1 (PAI-1 mRNA Binding Protein 1, also named SERBP1), is an RNA-binding protein containing an RG-rich domain and an RGG box domain that might be methylated by protein arginine N-methyltransferases (PRMTs). SERBP1 was identified as an interacting partner of a Tudor domain containing protein TDRD3, and can localize to cytoplasmic stress granules (SGs).

Storage

Storage:
Store at -20°C. Avoid exposure to light.
Storage Buffer:
PBS with 50% Glycerol, 0.05% Proclin300, 0.5% BSA, pH 7.3.
Aliquoting is unnecessary for -20°C storage

For technical support and original validation data for this product please contact:

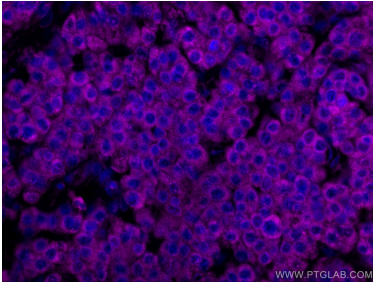
T: 4006900926

E: Proteintech-CN@ptglab.com

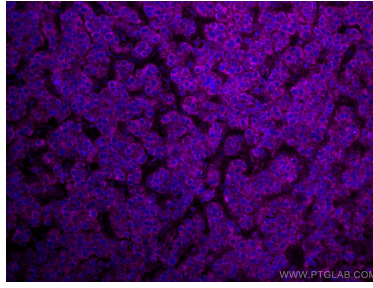
W: ptgcn.com

This product is exclusively available under Proteintech Group brand and is not available to purchase from any other manufacturer.

Selected Validation Data



Immunofluorescent analysis of (4% PFA) fixed human liver cancer tissue using CoraLite® Plus 647 SERBP1 antibody (CL647-67792, Clone: 1D4H1) at dilution of 1:200. DAPI (blue).



Immunofluorescent analysis of (4% PFA) fixed human liver cancer tissue using CoraLite® Plus 647 SERBP1 antibody (CL647-67792, Clone: 1D4H1) at dilution of 1:200.